

DECEMBER 2019 TO MARCH 2020



EXPERIENCE

JAPAN



Prices in this brochure are subject to change.
For current prices, please visit www.japanski.com.au
We constantly monitor and review exchange rates.



www.jtbtravel.com.au



JTB Australia

Where would you like to go?

Honshu	5
Hakuba	6
Nozawa Onsen	10
Myoko	12
Shiga Kogen	14
Naeba, Manza and Madarao	15
Aizu, Urabandai and Inawashiro	17
Appi and Shizukuishi	18
Zao and Hakkoda	19
Hokkaido	21
Niseko	22
Furano	25
Tomamu	26
Rusutsu and Kiroro	28
Ski Tours and Festivals	29
Honshu Ski Tours and Festivals	30
Tokyo Hotels and Tours	31
Kyoto Hotels and Tours	32
Other Cities Hotels and Tickets	33
Other Cities JR Pass and Korea Ski	34
Booking Conditions	35



Follow JTB Australia



General Japan site
www.jtbtravel.com.au



Luxury Japan site
www.japantravel.com.au



Welcome to **JAPAN**

Japan is probably best known for the bright lights and bustle of its two big cities, Tokyo and Kyoto. Less well known, however, is that only a short distance away are some 600+ ski resorts, boasting some of the world's best champagne powder snow, challenging runs and amazing scenery.

Japan's myriad of ski resorts are well serviced, uncrowded, and offer beautiful skiing across a variety of terrain. Tree runs, backcountry and guided tours further reward the most discerning deep powder enthusiast, with repeat runs on untracked snow often enjoyed well into the afternoon.



Who we are

Here at JTB Australia we have been providing Japan travel experiences to Australians since 1962. That's over 50 years doing what we do best, showcasing the best of Japan and getting Australians on the slopes of the numerous ski resorts. In fact, the JTB Group Japan has been providing Japan travel experiences since 1912. For the past 100 years, throughout the incredible ups and downs of the world we've been offering amazing travel experiences day in and day out for travellers like you. JTB is an IATA and ATAS member, and has offices all around the world, including Australia and New Zealand, so you can rest assured that we are a bricks-and-mortar style travel agency, too!

So, why choose us?

JTB WILL TAKE YOU ALL THE WAY:

JTB's land packages include not only ski accommodation and ski lift passes but also transport right to your resort.

JTB ENSURES YOUR SAFETY:

All accommodation that JTB recommends and books has passed strict safety compliance requirements in Japan. These include company registration, permits for guest accommodation, fire safety regulations, permits to serve food (where food is provided) and public liability insurance. Your safety is of our utmost concern.

JTB IS NUMBER ONE IN AUSTRALIA:

JTB is the biggest Japan travel operator in Australia. JTB not only caters for your ski requirements but also travelling in Japan in general. You can depend on us as a one stop shop for your pre & post-ski sightseeing, accommodation and your total Japan Experience.

JTB CAN TAILOR MAKE YOUR ITINERARY:

Packages in our brochure offer just a small selection of options for your ski holiday. JTB can also create a personal itinerary to suit your individual needs. Call us now to book your next trip to Japan. Rest easy knowing your travel plans are in the hands of JTB, the Japan Travel experts.

To avoid disappointment, JTB Australia recommends that all land arrangements are pre-booked prior to your departure from Australia. Popular accommodation often fills up early. Bookings can easily be made via phone or email to your nearest JTB office located in Sydney and Melbourne (see back of brochure or our website for details).

All package prices are land only. We are also happy to quote on airfares and custom build a package to your personal requirements. Please contact JTB or your licensed travel agent today for more information.

VISA INFORMATION



Australian Passport Holders – Do not require pre-prescribed visas. You will be issued with a visitors entry permit valid for stays up to 90 days upon arrival in Japan, provided you have proof of ongoing travel and have at least 6 months of validity on your passport from the date of return into Australia.

Other passport holders – Please contact your department of foreign affairs or the consulate of Japan to check your specific visa requirements, if any.

HEALTH INFORMATION



Whilst Japan is a first world country that has a very high standard of healthcare available, please consider your physical and mental health before travelling to Japan. The Australian Government and JTB recommend that you consult your local health care professional at least 8 weeks before you depart for Japan for a check up and to get the most up to date information on any applicable vaccinations or current state of affairs specific to your health.

TRAVEL INSURANCE



Skiing and snowboarding, whilst a whole ton of fun, can be quite dangerous. Regardless of how proficient you are or how healthy and fit you may be, accidents can strike at anytime. It is imperative that you take out a comprehensive travel insurance policy before you travel to Japan. JTB Australia has a range of travel insurance products at our disposal, please contact one of our friendly team members on 1300 739 330 for more information.

Key information

December 2019 To March 2020

01 JAN
New Year's
Day
Holiday

13 JAN
Coming
of Age
Day

11 FEB
National
Foundation
Day

23 FEB
Emperor's
Birthday

20 MAR
Spring
Equinox Day

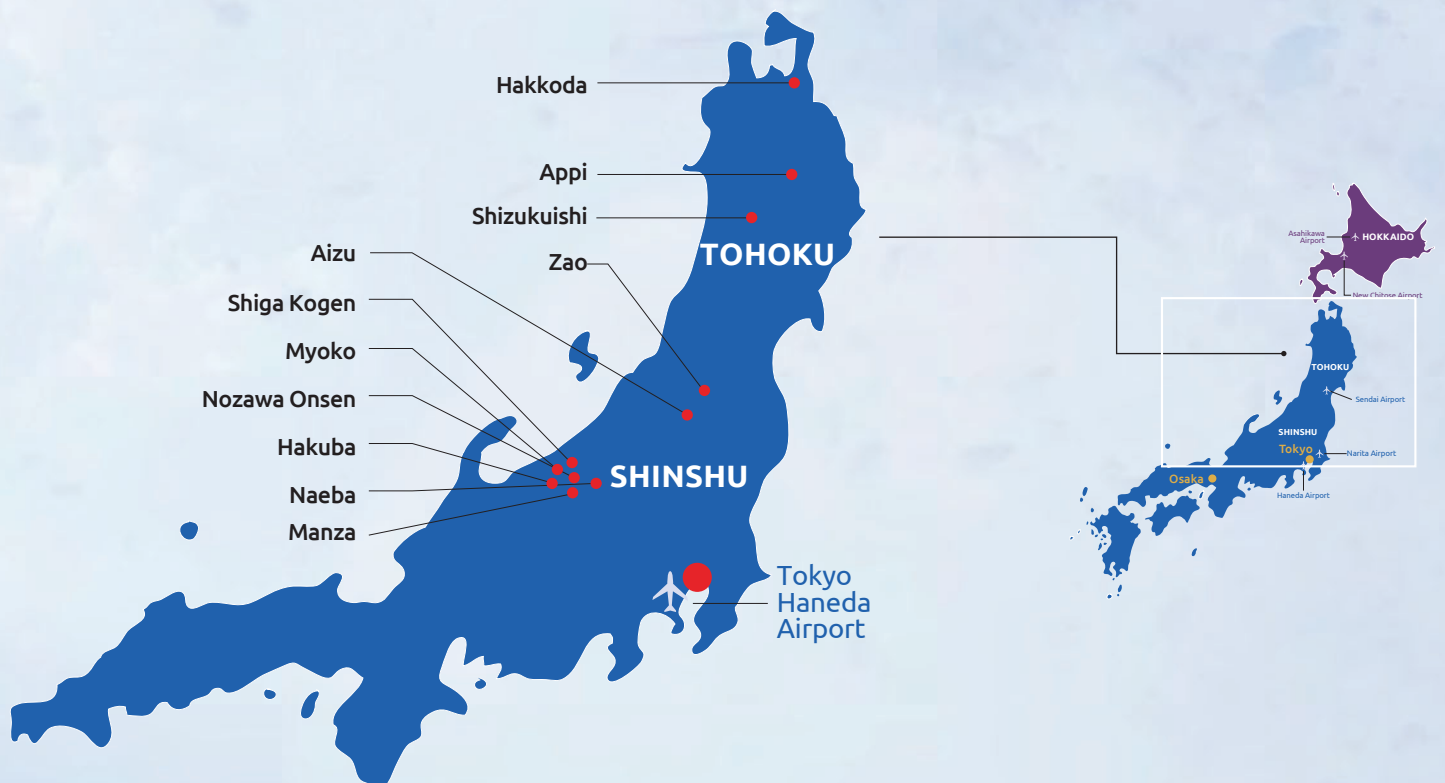
Honshu Ski Information

HONSHU

Honshu is the main island of Japan and is a fantastic choice for skiers and snowboarders of all levels, for families and couples, groups or honeymooners. Boasting hundreds of resorts and some of the most exciting and intriguing cities in the world, Honshu is a must do for the winter sports enthusiast.

The island itself is split into many different sections, but for the powder hounds there are two major areas of note, Tohoku and Shinshu. These two areas are home to the Japans classic ski resorts such as Hakuba in Shinshu and Zao Onsen in Tohoku. Honshu is also blessed with fantastic snow quantity and quality, with most areas receiving a dumping of 13m of light, powdery snow every year.

Two of the major airline hubs for Japan are located on Honshu, being Osaka and Tokyo. This makes it extremely easy to access both Shinshu and Tohoku ski resorts from Australia without having to take ungainly stopovers, transfers and connecting flights. The Central Japanese Alps of Shinshu are located roughly 3 hours from Tokyo, where as the Tohoku mountains are between 3-6 hours from Tokyo.





THE RESORTS

Situated among the stunning backdrop of the Northern Japanese Alps, Hakuba has become a worldwide ski destination of the highest quality. First founded in 1928, Hakuba has seen millions of travellers grace its many slopes, including some of the best winter athletes in the world during the 1998 Nagano Winter Olympics. Located 4 hours and 300km from Tokyo, Hakuba is not a ski resort as such, rather it is comprised of 9 individual ski resorts: Happo One, Hakuba 47, Goryu, Tsugaiké, Cortina, Norikura, Iwatake, Kashimayari and Jiigatake.

Hakuba boasts the steepest runs in Japan, which is quite incredible considering Japan has more than 600 ski resorts! There are 9 major ski resorts in Hakuba, which encircle the centrepiece of the 1998 Olympics, the ski jump stadium. All of Hakuba's ski resorts operate a fully enclosed gondola ski lift, which offers easy and comfortable access to the main slopes. There are also quad and double seat "express" chairlifts which give participants fast access to runs, if you can brave the conditions.

RESORT FACTS

Start Season: Mid December to Early May
Night Skiing: Yes, until 9pm
Max Elevation: 1,831m
Vertical Rise: 1,071m
Difficulty (beg/int/adv): 35%/40%/25%
Longest Course: 8,000m
No. of Courses/Runs: 79
No. of Lifts & Gondolas: 135
Max Gradient: 35 degrees

GETTING THERE

Roughly 4 hours outside of central Tokyo, Hakuba has benefited from the wonderful network of transport available throughout Japan, giving skiers and snowboarders ease of access from all major cities on the island of Honshu. There are various options for travellers to get to Hakuba, these include train, bus and car. The fastest route to Hakuba is catching a combination of train and bus that would see you get to Hakuba in 3.5-4hrs. This gives you the fantastic experience of travelling on the Shinkansen bullet train, a must do whilst in Japan. The alternate route is by catching the Nagano Snow Shuttle. This service departs from Narita or Haneda Airports and is the most direct option, albeit slightly more expensive and requires more time, roughly 5.5hrs.

TRANSPORT

Narita/Haneda Airport to Hakuba
From \$141 per person one way, coach, 5 hrs
Narita/Haneda Airport, Tokyo to Nagano
From \$221 per adult (5 day flexi JR East pass)
Nagano to Hakuba
Local bus, 1 hr

Honshu Hakuba Hotels



HAKUBA YAMANO HOTEL

LOCATION: JUMP STADIUM

A 10-minute drive from Happo-One Ski Resort and a 5-minute drive to Hakuba 47 Winter Sports Park, this property offers both Japanese and western rooms and hot springs.

7 nights from	Standard twin share
\$1,438pp (Standard rate)	24 Feb-31 Mar
\$1,306pp	EARLY BIRD SPECIAL Book by 31 Oct

Includes daily breakfast + 6 day ski lift pass
Child Discount Applies 12yrs and under



HAKUBA MOEGI

LOCATION: HAPPO

Only a minute walk from Happo Gondola Station. Modern and quiet, this hotel provides a comfortable environment for your stay.

7 nights from	Standard twin share
\$1,631pp (Standard rate)	01-20 Dec, 26 Feb-31 Mar

Includes daily breakfast + 6 day ski lift pass
Child Discount Applies 12yrs and under



MOMINOKI HOTEL

LOCATION: WADANO

A deluxe hotel conveniently located in Wadano area, next to Happo-One lifts. With sophisticated guest rooms enjoy the beautiful forest views from your room window. Natural indoor and outdoor hot springs also available.

7 nights from	Standard twin share
\$1,811pp (Standard rate)	01-13 Dec, 23 Feb-31 Mar

Includes daily breakfast + 6 day ski lift pass
Child Discount Applies 12yrs and under



HAKUBA HOTEL CULTURED

LOCATION: MISORANO

A budget hotel located in the Misorano area of Hakuba village and is close to the famed Happo-One Ski Resort.

7 nights from	Standard twin share
\$1,509pp (Standard rate)	15-27 Dec, 05 Jan-31 Mar (Except before Public Holiday)

Includes daily breakfast + 6 day ski lift pass
Child Discount Applies 12yrs and under



LA NEIGE HONKAN

LOCATION: WADANO

A beautiful European style hotel located in Wadano, a 10-minute walk to Happo-One Sakka lift.

7 nights from	Standard twin share
\$1,767pp (Standard rate)	01-20 Dec, 26 Feb-31 Mar
\$1,587pp	EARLY BIRD SPECIAL 90 day advanced purchase

Includes daily breakfast + 6 day ski lift pass
Child Discount Applies 12yrs and under



HAKUBA TOKYU HOTEL

LOCATION: WADANO

A luxury 4 star hotel located a 10-minute walk from Happo-One ski lifts. This European inspired property offers a range of western style rooms.

7 nights from	Standard twin share
\$1,909pp (Standard rate)	08-31 Mar, except Saturdays and before public holidays

Includes daily breakfast + 6 day ski lift pass
Child Discount Applies 12yrs and under



HOTEL GORYUKAN

LOCATION: HAPPO-ONE

Hotel Goryukan is a clean and comfortable family friendly hotel, located 5-minutes walk to the base of Happo-One ski area.

7 nights from	Standard twin share
\$1,537pp (Standard rate)	01-20 Dec, 01-31 Mar

Includes daily breakfast + 6 day ski lift pass
Child Discount Applies 12yrs and under



HOTEL ABEST HAPPO ALDEA

LOCATION: WADANO

Located right at Happo-One ski ground. This hotel prides itself in delivering high quality customer service. Offers a free shuttle service to local restaurants & bars every evening.

7 nights from	Standard twin share
\$1,811pp (Standard rate)	14-26 Dec, 01 Feb-31 Mar

Includes daily breakfast + 6 day ski lift pass
Child Discount Applies 12yrs and under



LA NEIGE HIGASHIGAN

LOCATION: WADANO

This stylish European inspired property located within walking distance to the Sakka chair lifts in the Wadano area of Hakuba.

7 nights from	Standard twin share
\$2,423pp (Standard rate)	01-20 Dec, 01-31 Mar
\$2,150pp	EARLY BIRD SPECIAL 90 day advanced purchase

Includes daily breakfast + 6 day ski lift pass
Child Discount Applies 12yrs and under

Honshu Hakuba Hotels



HOTEL DELAILE

LOCATION: WADANO

Located only a 3-minute walk to the slopes, this property offers compact rooms with private facilities. The hotel also has both indoor and outdoor hot springs on site.

7 nights from	Standard twin share
\$1,194pp (Standard rate)	01-31 Mar

Includes 6 day ski lift pass

Child Discount Applies 12yrs and under

4 bedroom rates also available



BRAZE CLUB

LOCATION: WADANO

The Hakuba Braze Club is a lodge style property in an excellent location, a leisurely 1-minute walk to the slopes of the Sakka chair lift in Happo-One.

7 nights from	Standard twin share
\$1,304pp (Standard rate)	08-31 Mar

Includes 6 day ski lift pass

Child Discount Applies 12yrs and under



BERGLAND

LOCATION: WADANO

Located right next to Happo Bus Terminal, Hakuba Bergland is a family run hotel that provides a warm and welcoming environment. Enjoy on site Hot springs and Japanese style rooms.

7 nights from	Japanese Style Room
\$1,474pp (Standard rate)	01-20 Dec, 01-31 Mar

Includes 6 day ski lift pass

Child Discount Applies 12yrs and under

Honshu Hakuba Apartments



ALPINE CHALET HAKUBA

LOCATION: ECHOLAND

A very affordable 2, 3 and 4 self contained chalet accommodation with free shuttle bus to major resorts. Located in Echoland and only 10-minutes walk from Happo bus terminal.

7 nights from	2 bedroom room (4 people)
\$957pp (Standard rate)	01-12 Dec, 01-31 Mar
7 nights from	3 & 4 bedroom room (6, 8 people)
\$946pp (Standard rate)	01-12 Dec, 01-31 Mar

Includes 6 day ski lift pass

Child Discount Applies 12yrs and under



ALPINE CONDOS

LOCATION: WADANO

Alpine Condos are the definition of a ski in, ski out apartment. Sitting right on the slopes of the magnificent Happo-One Ski Resort, these apartments are fantastic for small groups.

7 nights from	3 bedroom room (6 people)
\$1,128pp (Standard rate)	01-31 Mar

Includes 6 day ski lift pass

Child Discount Applies 12yrs and under



SKY PARK HAPPO

LOCATION: HAPPO SAKKA

Offering sleek luxury style 2, 3 & 4 bedroom apartments with convenient location. Only 1-minute from Happo Sakka Slope.

7 nights from	2 bedroom room (4 people)
\$1,337pp (Standard rate)	16-31 Mar
7 nights from	3 bedroom room (6 people)
\$1,184pp (Standard rate)	18-31 Mar

Includes 6 day ski lift pass

Child Discount Applies 12yrs and under



BLUEBIRD CHALET

LOCATION: ECHOLAND

Centrally located in the heart of Hakuba and a short walk to a number of restaurants, cafes and bars in Echoland, this property is the perfect choice to stay for your next ski holiday!

7 nights from	3 bedroom room (6 people)
\$1,309pp (Standard rate)	15-31 Mar

Includes 6 day ski lift pass

Child Discount Applies 12yrs and under



GAKUTO VILLA

LOCATION: WADANO

Two story chalets providing guests with modern and comfortable self contained experience. Located in Wadano area, only minutes away from restaurants, onsens and a short walk to Happo-One lifts.

7 nights from	2 bedroom room (4 people)
\$1,700pp	01-31 Mar

Includes 6 day ski lift pass

Child Discount Applies 12yrs and under



KOHARU RESORT HOTEL & SUITE

LOCATION: WADANO

Offering a range of apartments with low-key luxury and comfort, located at the Wadano area, guests can access to the nearby ski resorts by shuttle bus, just outside the accommodation.

7 nights from	2 bedroom room (4 people)
\$2,113pp	01-31 Mar
7 nights from	3 bedroom room (6 people)
\$1,823pp	01-31 Mar

Includes 6 day ski lift pass

Child Discount Applies 12yrs and under



HAKUBA VALLEY

5 DAY & 8 DAY SKI PACKAGES

5 Day Package A Inclusions:

- ▶ 4 nights accommodation
- ▶ Daily breakfast
- ▶ 3 day Hakuba Valley lift pass (Can be used at 10 ski resorts in Hakuba)

5 Day Package B Inclusions:

- ▶ Package A +
- ▶ Standard model ski or snowboard rental for 3 days

8 Day Package A Inclusions:

- ▶ 7 nights accommodation
- ▶ Daily breakfast
- ▶ 5 day Hakuba Valley lift pass (Can be used at 10 ski resorts in Hakuba)
- ▶ One free optional tour

8 Day Package B Inclusions:

- ▶ Package A +
- ▶ Standard model ski or snowboard rental for 5 days

Include Ski or Snowboard lesson package – prices available. See website for details
Prices for New Year periods, please contact JTB

HOTEL CULTURED

Standard room

20 Dec-31 Mar, except 29 Dec-04 Jan, 11-12 Jan, 08-10 Feb		
Price (per person) from	Adult	Child (7-12)
4 Nights 5 Day Package		
Package A	\$750	\$543
Package B	\$885	\$633
7 Nights 8 Day Package		
Package A	\$1,371	\$1,015
Package B	\$1,578	\$1,149

Package is available for up to 4 people

HOTEL GORYUKAN

Large room

22 Dec-29 Feb except 29 Dec-03 Jan		
Price (per person) from	Adult	Child (7-12)
4 Nights 5 Day Package		
Package A	\$924	\$483
Package B	\$1,071	\$580
7 Nights 8 Day Package		
EARLY BIRD Book by 30 Sep 19		
Package A	\$1,510	\$829
Package B	\$1,729	\$963

Package is available for 3-4 people
2 person rooms also available

HAKUBA YAMANO HOTEL

Maisonette Room

21 Dec-23 Feb except 27 Dec-04 Jan		
Price (per person) from	Adult	Child (7-12)
4 Nights 5 Day Package		
Package A	\$1,071	\$718
Package B	\$1,216	\$813
7 Nights 8 Day Package		
EARLY BIRD Book by 31 Oct 19		
Package A	\$1,273	\$860
Package B	\$1,492	\$993

Early bird offer includes one free dinner
Package is available for 4-5 people
2-3 person rooms also available

HOTEL ABEST HAPPO ALDEA

(former High Mount Hotel)

Standard room

22 Dec-09 Feb except 28 Dec-04 Jan		
Price (per person) from	Adult	Child (7-12)
4 Nights 5 Day Package		
EARLY BIRD Book by 31 Oct 19		
Package A	\$957	\$639
Package B	\$1,105	\$738
7 Nights 8 Day Package		
Package A	\$1,676	\$1,141
Package B	\$1,895	\$1,277

Early bird offer includes one free dinner
Package available for 2-4 people
Family up to 5 person rooms also available

LA NAIGE HONKAN

Deluxe room

14 Dec-29 Feb except 27 Dec-04 Jan		
Price (per person) from	Adult	Child (7-12)
EARLY BIRD Book by 30 Nov 19		
4 Nights 5 Day Package		
Package A	\$1,517	\$1,029
Package B	\$1,662	\$1,126
7 Nights 8 Day Package		
Package A	\$2,379	\$1,648
Package B	\$2,616	\$1,781

Early bird offer includes one free dinner
Package available for 3-4 people
2 person rooms also available

MOMINOKI HOTEL

Wa-Yo Family room

14 Dec-22 Feb except 27 Dec-04 Jan		
Price (per person) from	Adult	Child (7-12)
4 Nights 5 Day Package		
Package A	\$1,199	\$901
Package B	\$1,345	\$905
7 Nights 8 Day Package		
Package A	\$2,061	\$1,412
Package B	\$2,280	\$1,546

Package available for 3-6 people
2 person rooms also available

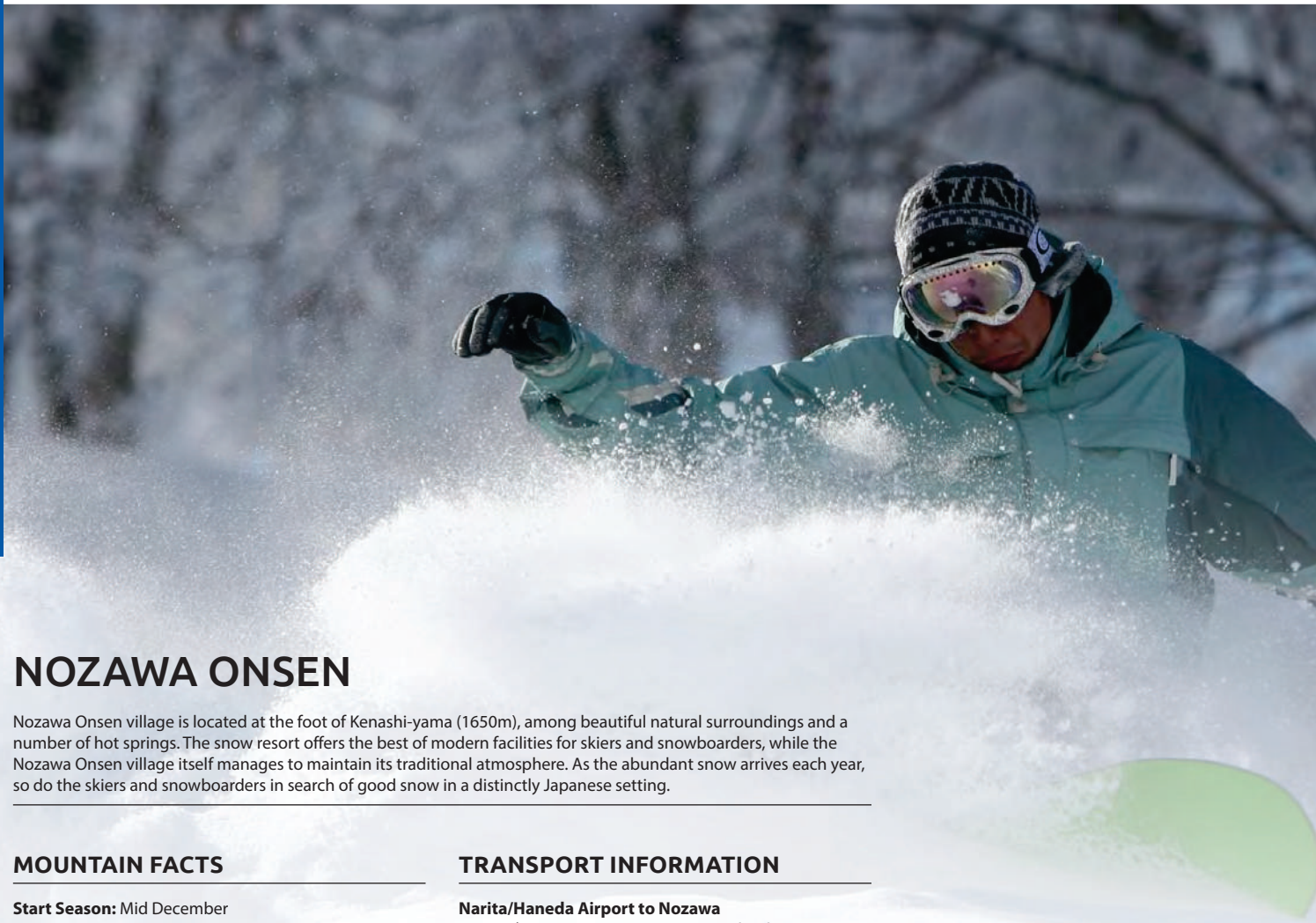
HAKUBA TOKYU HOTEL

Standard room

14 Dec-07 Mar except 21 Dec-04 Jan		
Price (per person) from	Adult	Child (7-12)
4 Nights 5 Day Package		
Package A	\$1,529	\$1,040
Package B	\$1,676	\$1,137
7 Nights 8 Day Package		
EARLY BIRD Book by 30 Sep 19		
Package A	\$2,323	\$1,595
Package B	\$2,541	\$1,731

Package available for 2-3 people
Deluxe rooms are also available

Please note that New Year surcharges will apply. Contact JTB for a quotation.



NOZAWA ONSEN

Nozawa Onsen village is located at the foot of Kenashi-yama (1650m), among beautiful natural surroundings and a number of hot springs. The snow resort offers the best of modern facilities for skiers and snowboarders, while the Nozawa Onsen village itself manages to maintain its traditional atmosphere. As the abundant snow arrives each year, so do the skiers and snowboarders in search of good snow in a distinctly Japanese setting.

MOUNTAIN FACTS

Start Season: Mid December
Season End: Mid April
Night Skiing: No
Max Elevation: 1,650m
Vertical Rise: 1,085m
Difficulty (beg/int/adv): 40%/30%/30%
Longest Course: 10,000m
No. of Courses/Runs: 20
No. of Lifts & Gondolas: 20
Max Gradient: 39 degrees

TRANSPORT INFORMATION

Narita/Haneda Airport to Nozawa
 – From \$141 per person one way, coach, 5 hrs

Narita/Haneda Airport, Tokyo to Iiyama
 – \$221 per adult, 5 day flexi JR East pass, approx 3 hrs

Iiyama to Nozawa
 – \$9 per person one way, bus, 25 mins



LODGE MATSUYA

A pension style accommodation providing both Western and Japanese-style rooms, located in the heart of Nozawa Onsen town. It is only a 3-minute walk to the moving walkway to the ski fields.

7 nights from	Western twin share
\$1,230pp (Standard rate)	20-28 Dec, 03-11 Jan, 16 Jan-31 Mar

Includes daily breakfast + 6 day ski lift pass
Child Discount Applies 15yrs and under



MIKAWAYA INN

This small, family run, Japanese style inn has been running for the better part of 50 years and provides guests with a true taste of Japanese hospitality.

7 nights from	Twin share, Japanese room
\$1,409pp (Standard rate)	12-21 Feb, 28 Feb-31 Mar

Includes daily breakfast + 6 day ski lift pass
Child Discount Applies 15yrs and under



RESORT INN CHITOSE

Located 2-minutes walk from the Yu Road walkway, Resort Inn Chitose is right in the thick of the action. Enjoy choice of both Japanese and Western styled rooms and ensuites come in all rooms.

7 nights from	Twin share, shared facilities
\$1,496pp (Standard rate)	01-20 Dec, 01-31 Mar

Includes daily breakfast + 6 day ski lift pass
Child Discount Applies 15yrs and under

Honshu Nozawa



GASTHOF SCHI-HEIL

Lodge style accommodation with large en-suite rooms located in the heart of the village. A 5-minute walk to the local public baths, restaurants, bars and a 7-minute walk to the moving walkway taking you to Hikage Gondola.

7 nights from	Western twin room
\$1,507pp (Standard rate)	14-20 Dec, 01-31 Mar
\$1,352pp	STAY 7 PAY 6

Includes daily breakfast + 6 day ski lift pass
Child Discount Applies 15yrs and under



HAUS ST. ANTON

A European style boutique lodge ideal for any type of traveller. Only a 3-minute walk to the moving walkway which takes you to the Ski Resort. Also close to restaurants, bars and shops in town.

7 nights from	Twin share, shared facilities
\$1,726pp (Standard rate)	01-20 Dec, 08-31 Mar

Includes daily breakfast + 6 day ski lift pass
Child Discount Applies 15yrs and under



NOZAWA ONSEN HOTEL

A comfortable and spacious property with good facilities and located close to the slopes. The hotel is positioned approx 3-minutes walk to the Yu Road moving walkway to the slopes.

7 nights from	Western twin room
\$1,737pp (Standard rate)	01-31 Mar

Includes daily breakfast + 6 day ski lift pass
Child Discount Applies 15yrs and under



NAKAJIMAYA

A Japanese style accommodation located in the centre of Nozawa Onsen town and only a 4-minute walk to the Ski resort. This Ryokan also provides an Onsen hot spring.

7 nights from	Japanese style room
\$1,737pp (Standard rate)	01-31 Mar

Includes daily breakfast + 6 day ski lift pass
Child Discount Applies 15yrs and under



KAWAICHIYA

A Japanese style accommodation located close to the central village and less than 400m from the Shinyu ski lift.

7 nights from	Western twin room
\$1,800pp (Standard rate)	08-31 Mar

Includes daily breakfast + 6 day ski lift pass
Child Discount Applies 15yrs and under



TOKIWA RYOKAN

This traditional Japanese inn provides guests with an authentic experience from start to finish. The restaurant provides both Kaiseki style food and shabushabu hot pot.

7 nights from	Compact room
\$1,901pp (Standard rate)	08-31 Mar

Includes daily breakfast + 6 day ski lift pass
Child Discount Applies 15yrs and under



NOZAWA GRAND HOTEL

This property offers a variety of comfortable and stylish rooms and is only a 5-minute walk to the moving walkway that takes you to the ski lifts.

7 nights from	Economy Western twin room
\$2,015pp (Standard rate)	05-31 Jan, 07-31 Mar Excluding 11, 15 & 25 Jan

Includes daily breakfast + 6 day ski lift pass
Child Discount Applies 15yrs and under



JONNOBI

A stylish, modern, Japanese-style ryokan with 16 Japanese and Western rooms located in the heart of Nozawa Onsen town. A 3-minute walk to the moving walkway which takes you to the ski fields.

7 nights from	Twin share Japanese room with bed
\$2,043pp (Standard rate)	01-21 Dec, 01-31 Mar

Includes daily breakfast + 6 day ski lift pass
Child Discount Applies 15yrs and under



RYOKAN SAKAYA

Only a few minutes away from the ski slopes, this luxury Japanese-style ryokan is located in the heart of Nozawa Onsen town.

7 nights from	Twin share, Japanese room
\$2,251pp (Standard rate)	01-31 Mar

Includes daily breakfast + 6 day ski lift pass
Child Discount Applies 15yrs and under

MYOKO

Myoko is by no means a big city. A real mountain ski town, Myoko sits snug at the base of one of Japan's most beautiful mountains. Here you will find a profound, almost eerie silence that comes with the heavy blanket snows. The billowing steam of the local onsen (hot springs) promises warmth after a day in the snow. There are endless ways to enjoy skiing here, with powder snow, long scenic slopes and mogul courses for skiers to conquer.

MOUNTAIN FACTS

Start Season: Mid December
Season End: Mid April
Night Skiing: Yes, until 9pm
Max Elevation: 1,855m
Vertical Rise: 1,124m
Difficulty (beg/int/adv): 45%/35%/20%
Longest Course: 8,500m
No. of Courses/Runs: 54
No. of Lifts & Gondolas: 34
Max Gradient: 38 degrees

TRANSPORT INFORMATION

Narita/Haneda Airport to Myoko
 – From \$153 per adult one way, coach, 5 hrs
Narita/Haneda Airport, Tokyo to Nagano
 – \$221 per adult, 5 day flexi JR East pass, approx 3 hrs
Nagano to Myoko
 – local train / bus 40 mins



PETIT HOUSE FOR YOU

A bright, clean pension style guest house located 10-minutes walk away from the Akakura Kanko ski resorts sky cable gondola.

7 nights from	Western twin share
\$1,021pp (Standard rate)	01 Dec-31 Mar

Includes daily breakfast + 6 day ski lift pass
Child Discount Applies 12 yrs and under



AKAKURA PARK HOTEL

Economy style accommodation located in the heart of Akakura Onsen Ski Village and only a 4-minute walk to the ski lifts.

7 nights from	Western twin share, shared facility
\$1,076pp (Standard rate)	01-27 Dec, 03 Jan-31 Mar

Includes daily breakfast + 6 day ski lift pass
Child Discount Applies 12 yrs and under



AKAKURASO

A 5-minute walk from Akakura Onsen bus top, this property offers simple Japanese-style rooms with mountain views.

7 nights from	Japanese room, shared facilities
\$1,163pp (Standard rate)	01-29 Dec, 03 Jan-31 Mar

Includes daily breakfast + 6 day ski lift pass
Child Discount Applies 12 yrs and under



KOGEN HOTEL TAIZAN

A traditional Japanese style inn located 5-minutes walk to Akakura Kanko Resort or Akakura Onsen ski. The property has a mixture of Japanese and western rooms with four different onsen baths.

7 nights from	Western twin share
\$1,196pp (Standard rate)	01-28 Dec, 03 Jan-31 Mar

Includes daily breakfast + 6 day ski lift pass
Child Discount Applies 12 yrs and under



HOTEL MOC

Economy accommodation with combination Japanese and western rooms, located right opposite the Akakura Ski Resort.

7 nights from	Western twin share
\$1,265pp (Standard rate)	21-28 Dec, 08 Jan-29 Feb

Includes daily breakfast + 6 day ski lift pass
Child Discount Applies 12 yrs and under



AKAKURA YOURS INN

A small family run accommodation located in the highland resort area very close to Myoko Kogen JR Station.

7 nights from	Western twin share, toilet only
\$1,265pp (Standard rate)	24 Feb-31 Mar

Includes daily breakfast + 6 day ski lift pass
Child Discount Applies 12 yrs and under

Honshu Myoko



AKAKURA HOTEL & ANNEX

An economically priced property located a short walk to the ski lifts and village. The property is joined to the Akakura Hotel by a long hallway giving guests access to both facilities.

7 nights from	Western twin share
\$1,316pp (Standard rate)	01-29 Dec, 03 Jan-31 Mar

Includes daily breakfast + 6 day ski lift pass
Child Discount Applies 12 yrs and under



KOGAKURO HOTEL

A well located Japanese style ryokan in Akakura Village near the base of the ski resort. The property offers hot spring facilities.

7 nights from	Japanese or Western room, shared facilities
\$1,382pp (Standard rate)	01-27 Dec, 03 Jan-31 Mar

Includes daily breakfast + 6 day ski lift pass
Child Discount Applies 12 yrs and under



HOTEL CENTRAL

Located opposite the ski slopes and only a 5-minute walk to the main village area. This 3 star property provides good size guest rooms which are great for families and groups.

7 nights from	Japanese & Western twin share
\$1,437pp (Standard rate)	01 Dec-31 Mar

Includes daily breakfast + 6 day ski lift pass
Child Discount Applies 12 yrs and under



TSUBAME HIGHLAND LODGE

Only 5-minute drive to Seki Onsen ski area and able to ski straight down to Akakura ski resort, this property is well located and boasts both outdoor and indoor onsen hotsprings.

7 nights from	Japanese room
\$1,524pp (Standard rate)	01-29 Dec, 03 Jan-31 Mar

Includes daily breakfast + 6 day ski lift pass
Child Discount Applies 12 yrs and under

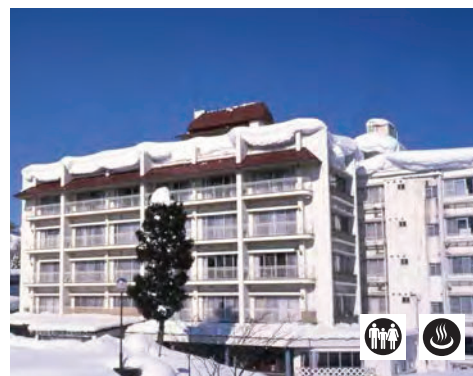


RESORT HOTEL ALP

A European inspired ski in/out property which is easily accessible not only to the ski fields but to the local village as well.

7 nights from	Western twin share
\$1,590pp (Standard rate)	01-29 Dec, 03 Jan-31 Mar

Includes daily breakfast + 6 day ski lift pass
Child Discount Applies 12 yrs and under

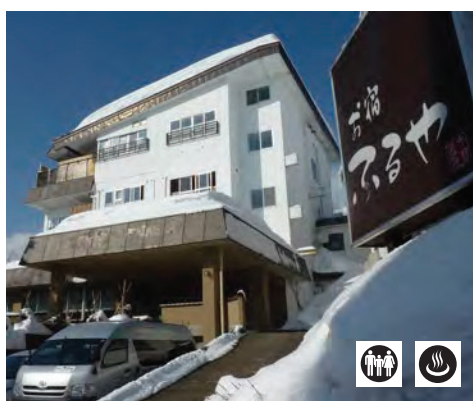


AKAKURA HOTEL MAIN

Located only a short distance to Akakura Onsen ski area and a short walk to main village street and restaurants/shops.

7 nights from	Japanese room, twin share
\$1,689pp (Standard rate)	01-29 Dec, 03 Jan-31 Mar

Includes daily breakfast + 6 day ski lift pass
Child Discount Applies 12 yrs and under



OYADO FURUYA

Located in the centre of the main street of Akakura, the property provides convenient access to major ski resorts.

7 nights from	Japanese or Western room
\$1,820pp (Standard rate)	01-29 Dec, 03 Jan-31 Mar

Includes daily breakfast + 6 day ski lift pass
Child Discount Applies 12 yrs and under



AKAKURA KANKO HOTEL

A Deluxe European style ski resort with a unique Japanese touch, the property is ski in/out.

7 nights from	Western twin share
\$2,977pp (Standard rate)	07-19 Mar, 21-31 Mar

Includes daily breakfast + 6 day ski lift pass
Child Discount Applies 12 yrs and under



Honshu Shiga Kogen

Shiga Kogen is a Mecca for skiing and winter sports enthusiasts. Located just a short distance from Tokyo, Shiga Kogen is easily the largest ski area in Japan, and offers an amazing 21 interlinked ski resorts all covered by one ski pass. The accommodation villages, scattered throughout the central ski areas, offer a wide variety of resort and lodge options, with a coach shuttle operating all day through the region (free with all ski passes). The great selection of bars and restaurants in the area offer Australians a traditional Japanese eating experience, with delicious hot food and sake a great bonus in a still largely undiscovered destination for international skiers.

MOUNTAIN FACTS

Start Season: Mid December
Season End: Early May
Night Skiing: Yes, until 9pm
Max Elevation: 2,305m
Vertical Rise: 1,071m
Difficulty (beg/int/adv): 40%/35%/25%
Longest Course: 6,000m
No. of Courses/Runs: 139
No. of Lifts & Gondolas: 109
Max Gradient: 39 degrees

TRANSPORT INFORMATION

Narita/Haneda Airport to Shiga Kogen
 – \$179 per adult one way, coach, 5 hrs
Narita/Haneda Airport, Tokyo to Nagano
 – \$221 per adult – 5 day flexi JR East pass, 1.5 hrs
Nagano to Shiga Kogen
 – Local bus, 1 hr



SHIGA WHITE HOTEL

LOCATION: YAMANOUCHI

Located 5-minutes on foot from Ichinose ski area, this property is a Western style hotel with Japanese hospitality. The atmosphere of the hotel is wholesome, family friendly and relaxing.

7 nights from	Twin share
\$1,418pp (Standard rate)	21-28 Dec, 02-10 Jan, 13 Jan-21 Feb, 24-29 Feb

Includes daily breakfast + 6 day ski lift pass
Child Discount Applies 18yrs and under



SHIGA KOGEN PRINCE HOTEL

LOCATION: YAKEBITAI-YAMA

Located in Yakebitai-yama ski field, this resort is perfect for both skiing and snowboarding as this area boasts excellent quality of snow.

SOUTH WING

7 nights from	Twin share
\$661pp	EARLY BIRD SPECIAL Book by 31 Aug
14-27 Dec, 03-10 Jan, 13 Jan-07 Feb, 24 Feb-31 Mar	

Price includes: Stay 7 Pay 6 + daily breakfast + 3 day Shiga Kogen lift pass + 3 days Yakebitaiyama lift pass
Child Discount Applies 18yrs and under



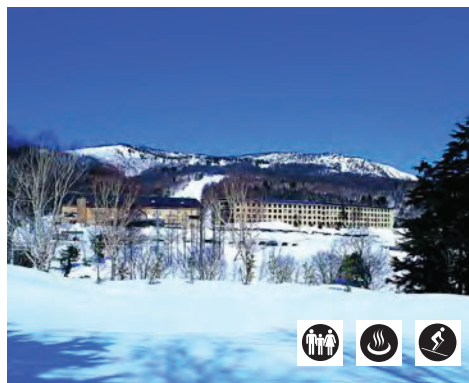
OKUSHIGA KOGEN HOTEL

LOCATION: OKUSHIGA

Located in the Okushiga Kogen ski area, all 74 rooms – standard, superior, deluxe, suite room options are ski in/ ski out with Yakebitai Mountain views. Many activities including an international ski school, snow cat tour, snow shoeing and kids park are available.

7 nights from	Twin share
\$2,068pp (Standard rate)	05-11 Jan, 13-25 Jan, 01 Feb-22 Feb, 24-31 Mar

Includes daily breakfast + 6 day ski lift pass
Child Discount Applies 18yrs and under



WEST WING

7 nights from	Twin share
\$840pp	EARLY BIRD SPECIAL Book by 31 Aug
20-27 Dec, 03-11 Jan, 13 Jan- 22 Feb, 24 Feb-19 Mar, 22-28 Mar	

Price includes: Stay 7 Pay 6 + daily breakfast + 3 day Shiga Kogen lift pass + 3 days Yakebitaiyama lift pass
Child Discount Applies 18yrs and under



HOTEL ALPENBURG

LOCATION: YAMANOUCHI

Located right at the slopes of Shiga Kogen Giant ski area, only a minute walk to the lifts this European inspired chalet is an ideal option for all snow lovers!

7 nights from	Twin share
\$2,125pp (Standard rate)	09-31 Mar

Includes daily breakfast + 6 day ski lift pass
Child Discount Applies 18yrs and under



EAST WING

7 nights from	Twin share
\$1,293pp	EARLY BIRD SPECIAL Book by 31 Aug
14-27 Dec, 03-10 Jan, 13 Jan-07 Feb, 09-21 Feb, 24 Feb-31 Mar	

Price includes: Stay 7 Pay 6 + daily breakfast + 3 day Shiga Kogen lift pass + 3 days Yakebitaiyama lift pass
Child Discount Applies 18yrs and under

Honshu Naeba, Manza and Madarao

NAEBA

Naeba is the perfect getaway for any traveller looking to get a little Japan ski experience during their Tokyo stay. It is the most accessible resort from Tokyo city.

TRANSPORT INFORMATION

Tokyo to Naeba

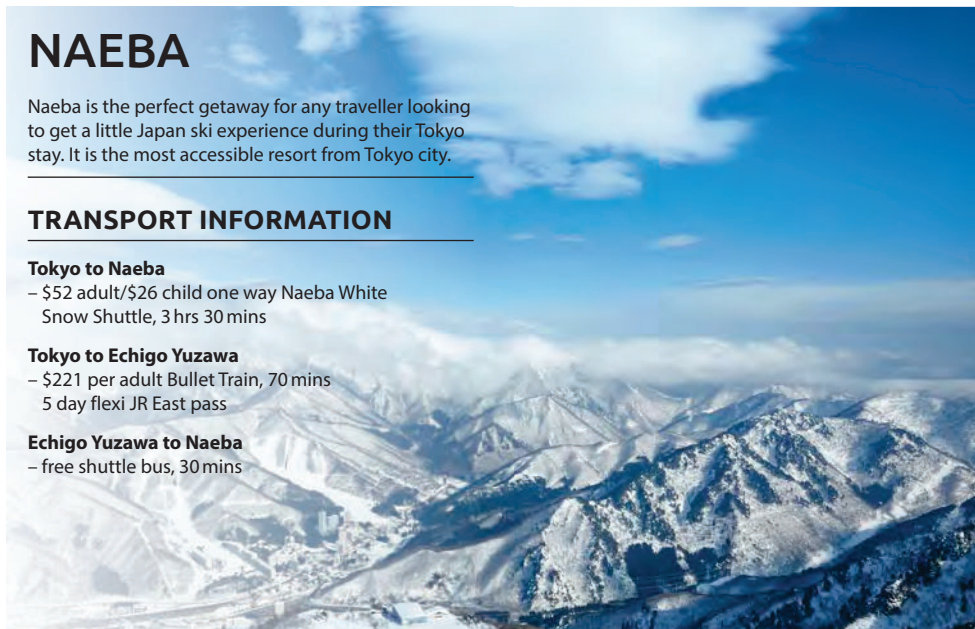
– \$52 adult/\$26 child one way Naeba White Snow Shuttle, 3 hrs 30 mins

Tokyo to Echigo Yuzawa

– \$221 per adult Bullet Train, 70 mins
5 day flexi JR East pass

Echigo Yuzawa to Naeba

– free shuttle bus, 30 mins



NAEBA PRINCE HOTEL

5 nights from	Twin share B, building 4 & 6
\$849pp (Standard rate)	04-31 Mar
\$664pp	EARLY BIRD SPECIAL Book by 31 Aug

Includes daily breakfast + 4 day ski lift pass
Early bird booking also offer 50% off equipment hire
Child Discount Applies up to 12yrs

MANZA

A beautiful hot spring resort town offering well groomed uncrowded slopes combined with spectacular vistas in pristine surroundings. A great escape for skiers and snowboarders seeking a relaxing holiday not too far from Tokyo.

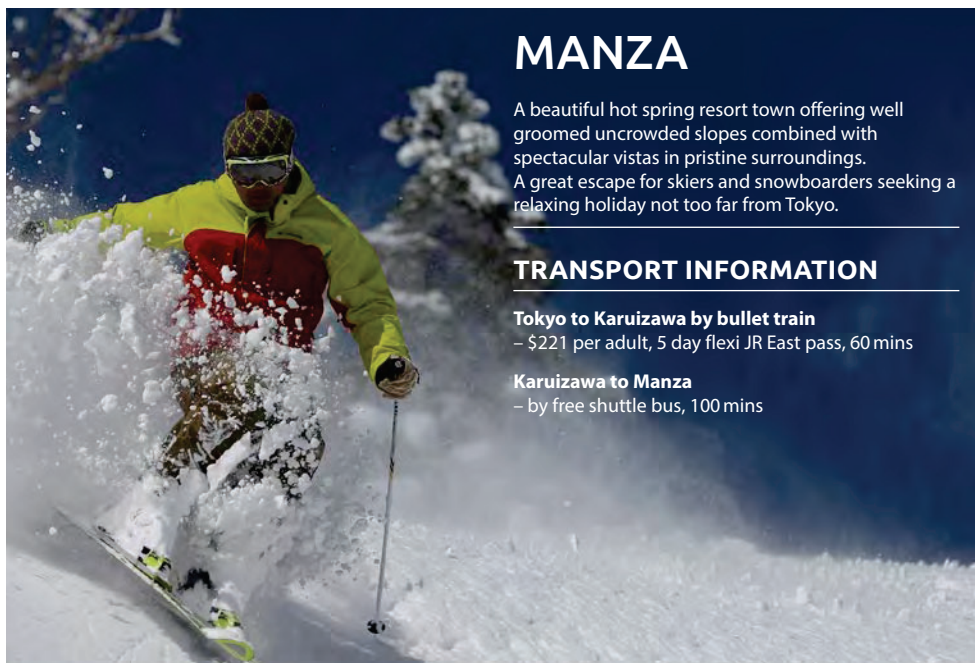
TRANSPORT INFORMATION

Tokyo to Karuizawa by bullet train

– \$221 per adult, 5 day flexi JR East pass, 60 mins

Karuizawa to Manza

– by free shuttle bus, 100 mins



MANZA PRINCE HOTEL

Manza Prince Hotel sits amongst the beautiful backdrop of Joshinetsu National Park and offers a ski in/out location for the discerning powder hound, meaning less time transporting your gear and more time using it on the mountain.

4 nights from	Twin share
\$583pp (Standard rate)	WD 21-29 Dec, 05-11 Jan, 13 Jan-21 Feb, 24 Feb-19 Mar
\$424pp	EARLY BIRD SPECIAL Book by 30 Sep

Includes daily breakfast + 3 day ski lift pass
Child Discount Applies up to 12yrs

MADARAO KOGEN

Madarao Mountain Resort is located in the north-eastern part of Nagano prefecture and is renowned for its average snowfalls of about 10 to 13 meters per season. There is some great tree skiing and reasonably steep bowls, and off-piste skiing is permitted. This resort is still somewhat of an undiscovered treasure but is quickly gaining in popularity!

TRANSPORT INFORMATION

Narita/Haneda Airport to Madarao

– From \$153 per person one way, coach, 5 hrs

Narita/Haneda Airport, Tokyo to Iiyama

\$221 per adult (5 day flexi JR East pass, approx. 3 hrs)

Iiyama to Madarao

– by bus, 0.5 hrs

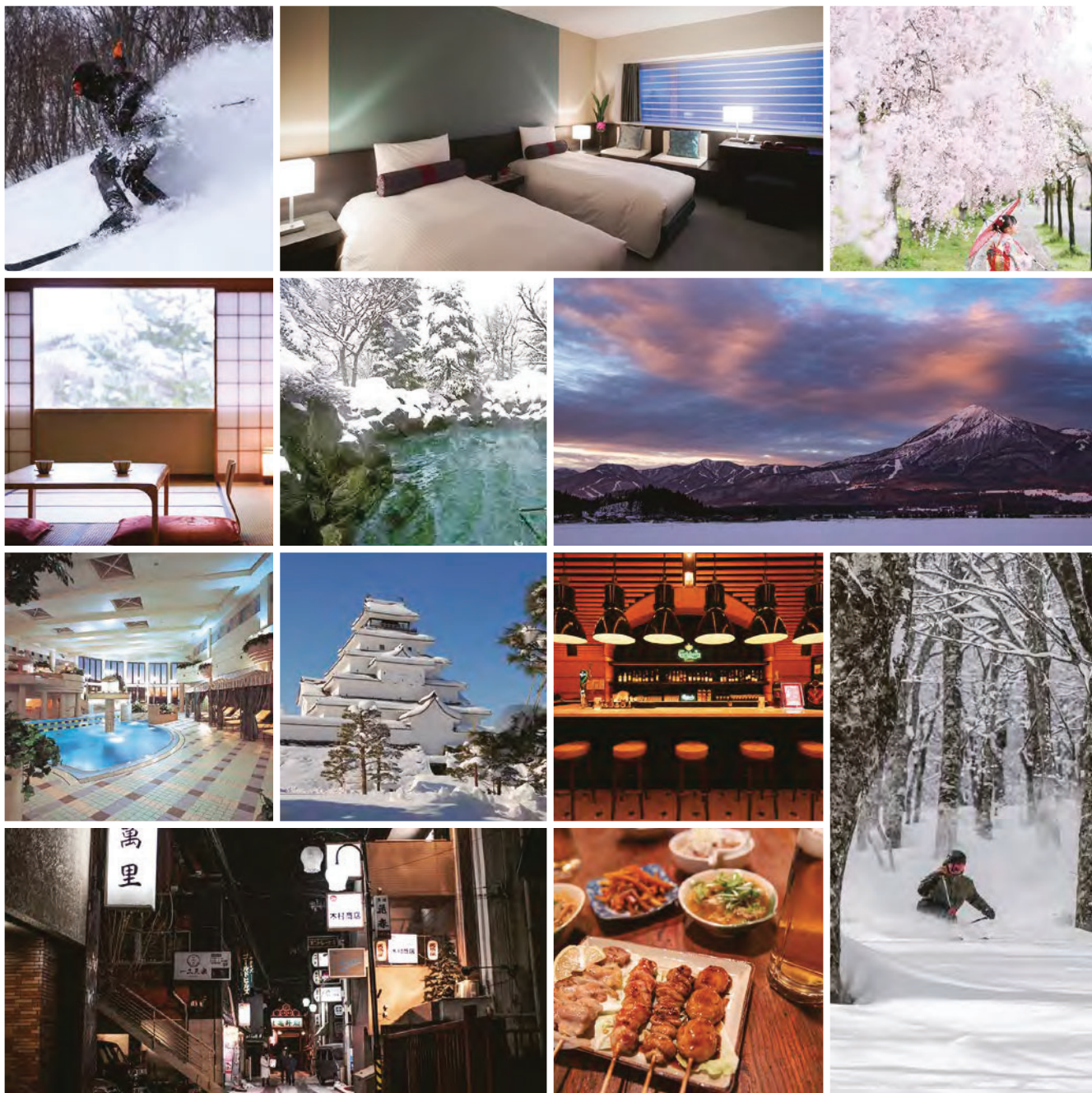


MADARAO KOGEN HOTEL

A well located ski in/out property with Western/Japanese style combination rooms accommodating up to 4 people. Features include outdoor hot springs on site, communal bar area with open fire, ski rentals plus much more.

5 nights from	Twin share
\$987pp (Standard rate)	WD 15-31 Mar

Includes daily breakfast + 4 day ski lift pass
Child Discount Applies up to 12yrs



AWESOME POWDER PARADISE



Aizu area is located inland of Japan Sea coastline in Tohoku area. With 22 ski resorts you can choose, and Samurai Culture oriented traditional town, you will be making the most out of your trip with amazing skiing and snowboarding, and experiencing the "Real Japan."



aizuski.jp

Honshu Aizu, Urabandai and Inawashiro

AIZU

Located in the Tohoku region, just 80 minutes away from Tokyo on the Shinkansen bullet train, the Aizu region is a powder paradise. The region boasts an impressively long ski season with high quality snow and a variety of terrain featuring many different ski resorts.

The region has remained a well kept secret enjoyed mostly by local Japanese visitors, which means you don't have to contend with crowds on the slopes. The quality of snowfall provides the ultimate ski experience with world-class runs and crazy amounts of untracked powder for beginner's right though to experts.



LISTEL INAWASHIRO WING TOWER

A large lively winter ski resort located near Bandai Mountain and Lake Inawashiro. Free schedule ski shuttles provided between resorts.

5 nights from	Twin share
\$575pp (Standard rate)	10-27 Dec, WD 05 Jan-31 Mar

Includes daily breakfast + 4 day ski lift pass
Child Discount Applies under 18yrs



ACTIVE RESORT URABANDAI

At the foot of Hoshino Nekoma ski resort, offering Japanese, Western-style rooms and indoor/outdoor hot-springs. Also only 15-minutes by shuttle to/from Grandeco & Nekoma ski resorts.

5 nights from	Twin share
\$575pp (Standard rate)	10-27 Dec, WD 05 Jan-31 Mar

Includes daily breakfast + 4 day ski lift pass
Child Discount Applies under 18yrs



URABANDAI GRANDECO TOKYU HOTEL

A 10-minute walk from Grandeco Snow Resort, the hotel offers 2 restaurants and a variety of indoor and outdoor bath facilities. All rooms boast a balcony with mountain views.

5 nights from	Twin share
\$575pp (Standard rate)	10-27 Dec, WD 05 Jan-31 Mar

Includes daily breakfast + 4 day ski lift pass
Child Discount Applies under 18yrs



URABANDAI LAKE RESORT

Located in the Aizu region, this lovely hotel has both Western & Japanese style rooms with public bath and open air bath onsite. Provides free shuttle services to ski resorts in the vicinity.

5 nights from	Twin share
\$575pp (Standard rate)	10-27 Dec, WD 05 Jan-31 Mar

Includes daily breakfast + 4 day ski lift pass
Child Discount Applies under 18yrs

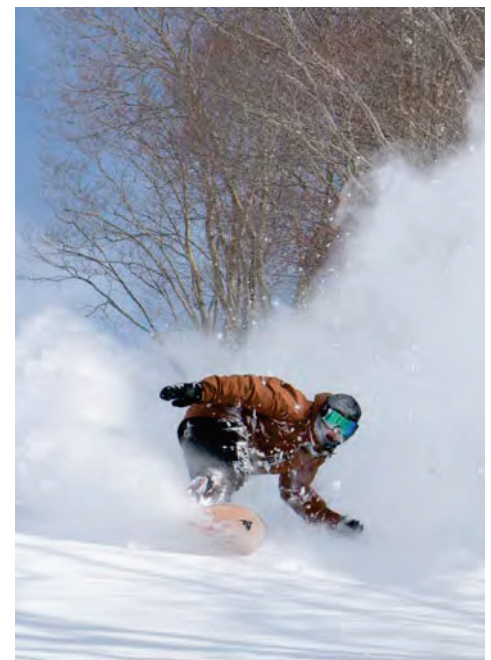


HOSHINO RESORT BANDAISAN ONSEN HOTEL

An upscale property located right near two ski resorts which guarantee great quality of powder snow – Alts Snow Park & Resort and Nekoma Snow Park Resort. After skiing activities are also available such as hot spring experience or paying a visit to the Samurai city.

5 nights from	Twin share
\$661pp (Standard rate)	10-27 Dec, 03 Jan-31 Mar

Includes daily dinner & breakfast + 4 day ski lift pass
Child Discount Applies under 18yrs



Honshu Appi and Shizukuishi

APPI

The highlands of Appi Kogen sit right next to Towada-Hachimantai National Park in northeast Honshu. Powder snow blankets each of Appi's mountains, with an 828 metre vertical rise from peak to base. Appi's 21 trails are accessed with ease and comfort. Appi Kogen offers fantastic variety, with everything from bunny slopes, a 5.5km cruiser, to steep and deep runs for adrenaline seekers. Appi Kogen has recently received top marks from a number of major ski magazines, and continues to be a popular choice for skier and snowboarder alike.

MOUNTAIN FACTS

Start Season: Mid December
Season End: End of March
Night Skiing: Yes, until 8pm
Max Elevation: 1,328m
Vertical Rise: 828m
Difficulty (beg/int/adv): 30%/40%/30%
Longest Course: 5,500m
No. of Courses/Runs: 21
No. of Lifts & Gondolas: 18
Max Gradient: 34 degrees

TRANSPORT INFORMATION

Narita/Haneda Airport to Tokyo
 – approx \$36 per adult, train, 20 mins-1 hr
Tokyo to Morioka/Shizukuishi
 – \$247, 5 day flexi JR East pass
Morioka to Appi Kogen
 – by bus or train, 1 hr



APPI HILLS SHIRAKABA NO MORI (VILLA 3)

Located only a 5-minute walk from the ski field and popular for its functional design and spacious Western and Japanese combination rooms. Ideal for families or groups.

7 nights from	Twin share
\$1,024pp (Standard rate)	01-20 Dec, 23 Feb-31 Mar
\$645pp	EARLY BIRD SPECIAL Book by 30 June

Special includes daily breakfast, 6 day lift pass, free use of indoor pool & 1 night room only at Morioka Grand Hotel Annex (Morioka City)
 Prices includes daily breakfast, 6 day lift pass
Child Discount Applies up to 18yrs



HOTEL APPI GRAND MAIN WING

High quality accommodation and convenient location, right on the slopes. The property is located also right next to the kid's snow park and offers a wide range of facilities and services, ideal for your next ski trip.

7 nights from	Twin share
\$1,024pp (Standard rate)	01-20 Dec, 23 Feb-31 Mar
\$645pp	EARLY BIRD SPECIAL Book by 30 June

Special includes daily breakfast, 6 day lift pass, Free use of indoor pool & One night room only at Morioka Grand Hotel Annex (Morioka City)
 Prices includes daily breakfast + 6 day lift pass
Child Discount Applies up to 18yrs



HOTEL APPI GRAND TOWER

7 nights from	Twin share
\$1,298pp (Standard rate)	01-20 Dec, 23 Feb-31 Mar
\$821pp	EARLY BIRD SPECIAL Book by 30 June

Special includes daily breakfast, 6 day lift pass, Free use of indoor pool & One night room only at Morioka Grand Hotel Annex (Morioka City)
 Prices includes daily breakfast + 6 day lift pass
Child Discount Applies up to 18yrs

SHIZUKUISHI

Shizukuishi Prince ski resort offers an exciting and unique skiing experience for everyone. A true Japanese ski resort tucked away in Iwate prefecture, the resort is perfectly positioned as ski-in ski-out with 6 lifts, including a ropeway and gondola and accommodates all levels. Other than the ski fields, another highlight of the resort is Takakura Onsen - a hot spring that has been recognised as an onsen heritage site.

SHIZUKUISHI PRINCE HOTEL

5 nights from	Twin share
\$806pp (Standard rate)	12-20 Dec, 05-10 Jan, WD 13-24 Jan, 11-21 Feb, 24 Feb-29 Mar
\$464pp	EARLY BIRD SPECIAL Book by 31 August

Includes daily breakfast + 4 day lift pass
Child Discount Applies up to 12yrs

MOUNTAIN FACTS

Start Season: Late December
Season End: Mid March
Night Skiing: Yes, (Fri, Sat & before Public Holidays) until 8pm
Max Elevation: 1,128m
Vertical Rise: 702m
Difficulty (beg/int/adv): 20%/40%/40%
Longest Course: 4,500m
No. of Courses/Runs: 11
No. of Lifts & Gondolas: 6
Max Gradient: 33 degrees

TRANSPORT INFORMATION

Narita/Haneda Airport to Tokyo
 – approx \$36 per adult, train, 20 mins – 1 hr
Tokyo to Morioka/Shizukuishi
 – \$247, 5 day flexi JR East pass
Shizukuishi Station
 – Hotel courtesy bus service, bus, 20 mins



Honshu Zao and Hokkoda

ZAO

Zao Onsen Ski Resort has courses for beginners through to advanced skiers, catering for families with young children and professionals alike. Zao is best known for its surreal phenomena, "Snow Monsters" which are large stacks of hardened ice, formed as wind sculpts snow to frozen fir trees. Skiing through the monsters is a rare treat, while onsen (hot-springs) at the bottom of the mountain soothe tired muscles and revitalise in time for dinner and the culinary delights that await. Zao Onsen Ski Resort is among 6 mountain peaks. It has access via 3 cable cars. Zao Onsen Ski Resort welcomes you with open arms and promises a holiday experience like no other.

MOUNTAIN FACTS

Start Season: Early December
Season End: Early May
Night Skiing: Yes, until 9pm
Max Elevation: 1,660m
Vertical Rise: 880m
Difficulty (beg/int/adv): 40%/40%/20%
Longest Course: 10,000m
No. of Courses/Runs: 26
No. of Lifts & Gondolas: 42
Max Gradient: 38 degrees

TRANSPORT INFORMATION

Narita/Haneda Airport to Tokyo
 – Train, 20 mins – 1 hr
Tokyo to Yamagata
 – \$249 per adult, 5 day flexi JR East pass, 2.5 hrs
Yamagata to Zao
 – Bus, 45 mins



HOTEL LUCENT TAKAMIYA

A well located property in the heart of Zao Onsen that offers a variety of Onsen facilities. Hotel Lucent Takamiya's prime location boasts a leisurely 100 metre walk to The Chuo ropeway gondola.



HOTEL RURIKURA RESORT

Located right at the foot of Yokokura ski slope this hotel is easily ski in/out accessible.



MIYMASO TAKAMIYA

A beautiful Japanese style accommodation offering Japanese hospitality located at the top of the Zao Village shopping street with easy access to shops and restaurants.

7 nights from	Twin share, Japanese room
\$1,492pp (Standard rate)	01-20 Dec, 24-27 Dec, 05-10 Jan, 13 Jan, 01-31 Mar

Includes daily breakfast + 6 day ski lift pass
Child Discount Applies up to 12yrs

7 nights from	Twin share
\$1,629pp (Standard rate)	01-21 Dec, 05-11 Jan, 14-31 Jan, 01-31 Mar

Includes daily breakfast + 6 day ski lift pass

7 nights from	Twin share
\$2,505pp (Standard rate)	01-20 Dec, 24-27 Dec, 05-10 Jan, 13 Jan, 01-31 Mar

Includes daily breakfast + 6 day ski lift pass
 Child under 12 not accepted



HAKKODA RESORT HOTEL

A world class powder resort for your next ski trip! This property is located only minutes away from the lifts so you can ski in/out right to the door. The hotel offers Onsen facilities, sauna, restaurant, room service, wireless internet and much more.

3 nights from	Western twin room
\$446pp (Standard rate)	WD of 01-27 Dec, 06-10 Jan, 13 Jan-07 Feb, 11 Feb-31 Mar

Includes daily breakfast + dinner



HAKKODA 3-DAY GETAWAY

Famous for powder snow, Hakkoda offers an extensive area for getting deep into the heart of the back country. Hakkoda can be reached from Tokyo or as a side trip from any other ski resort on the Honshu main island of Japan.

TRANSPORT

Tokyo to Shin Aomori
 – \$255 per adult (5 day flexi JR East pass, 3.5 hrs)
Shin Aomori to Hakkoda
 – Bus, 1 hr



TRANSPORT MADE EASY

Not only can you get to and from major ski resorts around Japan, you also have access to both Haneda and Narita International Airports, plus selected JR lines within Tokyo and surrounds.

Both passes offer excellent value for money, getting you on the snow for less than both the JR National pass and shuttle buses!

Enjoy all the flexibility that comes with the JR EAST PASS. You can use your pass for any 5 single days within a 14 day time frame.

MAJOR SKI DESTINATIONS

NAGANO

NIIGATA: HAKUBA, SHIGAKOGEN, NOZAWA ONSEN, MYOTO, MADARAO

TOHOKU: APPI, HAKKODA, ZAO, SHIZUKUISHI

CHEAPER
THAN BUSES

BETTER
THAN
JR NATIONAL

FLEXIBLE
FOR 5 DAYS
USE WITHIN
14 DAYS

COVERS
MAJOR SKI
DESTINATIONS

SAVINGS
PURCHASE
FROM JTB IN
AUSTRALIA
FOR THE BEST
RATE

Your Key to Unlimited Powder

Hokkaido Ski Information



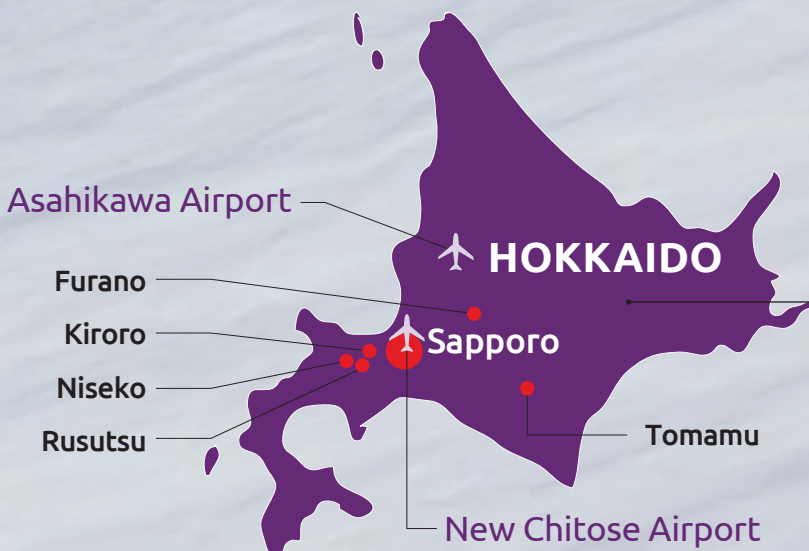
HOKKAIDO

Japan's northern most island, Hokkaido, is often touted as one of the best places in the world to ski and snowboard.

Plenty of long runs, backcountry skiing, moguls, cat skiing and heli skiing make Hokkaido an enviable place to put your skills to the test, but it's the deep powder that is Hokkaido's true draw card. Throughout the season Hokkaido gets blanketed with crisp powder snow that, generally, has very low moisture content. In turn, you can maraud down a mountain at speed whilst knee deep in light, fluffy, powdery goodness.

Another benefit of Hokkaido is that its season is quite significantly longer than its Honshu counterpart, with the season kicking off in mid December and stretching to early May. Sometimes this can be earlier or later, and it is dependent on which resort you are planning on visiting, but you can rest pretty comfortably knowing it is more than likely that you will be graced with excellent conditions between this period.

There are many major resorts in Hokkaido, including Furano, Rusutsu, Tomamu and the most popular for Australians, Niseko. There are many more, but each of these options has a little bit of something for everyone and they are easy to get to from New Chitose Airport, Hokkaido's central airport. Once in New Chitose Airport, getting to your ski resort will be anywhere from 2 to 5 hours via shuttle bus, depending on the conditions.



Please note that New Year surcharges will apply. Contact JTB for a quotation.

Hokkaido Niseko Ski Information

NISEKO

Niseko has become a quite the hot spot for Australian skiers, along with many other ethnicities from all around the world, particularly due to its hospitality toward foreign guests and the adaptability of Niseko's natives with reference to language and culture. Niseko United is the largest of the Hokkaido ski areas with 4 interlinked resorts; Anupuri, Grand Hirafu, Higashiyama and Hanazono, all of which are areas famous for deep powder snow. The 68 ski runs offer one of the most equally distributed difficulty ratings throughout the numerous ski resorts in Japan, with 21 runs for beginners, 25 for intermediate skiers and 22 for the seasoned veterans.

Similar to many of the ski resorts in Japan, Niseko offers an All Mountain Lift Pass which gives you the ability to explore all 4 of Niseko's ski resorts and their gondolas. Each resorts lifts have various different style of lifts which differ from run to run, including enclosed gondolas, quad chair lifts and express lifts.

RESORT FACTS

Start Season: Mid December
Season End: Early May
Night Skiing: Yes, until 9pm
Max Elevation: 1,170m
Vertical Rise: 890m
Difficulty (beg/int/adv): 30%/38%/32%
Longest Course: 5,600m
No. of Courses/Runs: 68
No. of Lifts & Gondolas: 35+
Max Gradient: 37 degrees

GETTING THERE

Niseko is located in the southwest quadrant of Hokkaido and has several modes of transport available for guests wishing to explore the area. First port of call is Sapporo's New Chitose Airport, which is roughly 110km from Niseko and offers accessibility options from most major airports throughout Japan. Once in New Chitose Airport, you have the choice of a train or travelling by road. In Japan, train may seem the usual suspect for the most efficient route of getting to your destination, however, Niseko is one of the exceptions.

The most efficient option is travelling by shuttle, with regular services running in conjunction with major flights into and out of New Chitose Airport and is quite easily the recommended way to get to and from Niseko. This will take you roughly 2.5 hours door to door and you can sit back and enjoy scenic view of the gorgeous snow capped mountains that dot the vast landscape of Japans northern island, Hokkaido.

TRANSPORT

New Chitose Airport to Niseko
Coach transfer, 2.5 hrs

Sapporo to Niseko
Coach transfer, 2.5 hrs

Niseko to Rusutsu
Coach transfer, 45 mins



Hokkaido Niseko Hotels



ALL PRICES INCLUDE:

- ▶ Return coach transfers from New Chitose Airport
- ▶ Daily breakfast
- ▶ 6 day ski lift pass
- ▶ **Child Discount** applies up to 11yrs



PENSION NEW WHITE BEAR

Pension style accommodation only a short walk away from lifts, shops and restaurants.

7 nights from	Standard twin share, shared bathroom
\$1,667pp (Standard rate)	01-29 Dec, 04 Jan-31 Mar



PENSION LOCOMOTION

Pension style accommodation located in the Hirafu Village. This property is a 10-minute walk to the closest lift or 1-minute walk to the closest bus stop. Easily accessible to restaurants, bars and a convenience store.

7 nights from	Standard twin share
\$1,667pp (Standard rate)	01 Dec-29 Feb



GREEN LEAF HOTEL

Located at the base of Mount Annupuri, Niseko. This property offers ski in/out facilities with lockers assigned to each guest room. Ski rental hire is also available.

7 nights from	Deluxe room
\$2,576pp (Standard rate)	14-20 Dec, 05-23 Jan, 07-29 Feb; Except 18 Jan, 15 Feb
\$2,217pp	EARLY BIRD SPECIAL Book by 31 July



HILTON NISEKO VILLAGE

A luxury property located at the foot of Niseko Annupuri Mountain, the main peak of Niseko mountain range. The property is directly connected to the ski area and also offers many ski activities.

7 nights from		
Deluxe twin share	Deluxe Panorama Room	17-19 Dec, 05-23 Jan, 26 Jan-17 Feb Excluding 24-25 Jan
\$3,265pp	\$5,454pp	Standard rate
\$2,398pp	\$3,930pp	EARLY BIRD SPECIAL Book by 30 Jun



NISEKO ANNUPURI RESORT

Located at the base of the Annupuri Ski Resort, this hotel provides a relaxed and modern environment in greater Niseko. Hot springs, beauty spa and excellent dining combine for a fantastic stay.

7 nights from	Standard Room
\$3,373pp	02 Feb-14 Mar



Hokkaido Niseko Apartments



HINODE HILLS

Exclusivity awaits every guest who walks through the doors of the Hinode Hills apartments. Elegantly designed and executed, this property adds a flare of luxury to your ski holiday.

7 nights from	Quad share
\$2,694pp (Standard rate)	01-19 Dec, 06-22 Jan, 03 Feb-31 Mar
\$2,114	EARLY BIRD SPECIAL Book by 31 Jul

Two bedroom apartment
Early bird also offer 50% off for mid range rental
Includes 6 day ski lift pass & return coach transfers from New Chitose Airport



KI NISEKO

A boutique ski-in ski-out hotel nestled at the foot of Grand Hirafu Resort.

7 nights from	Quad share
\$4,050pp (Standard rate)	05-24 Jan, 02-16 Feb

Includes 6 day ski lift pass & return coach transfers from New Chitose Airport

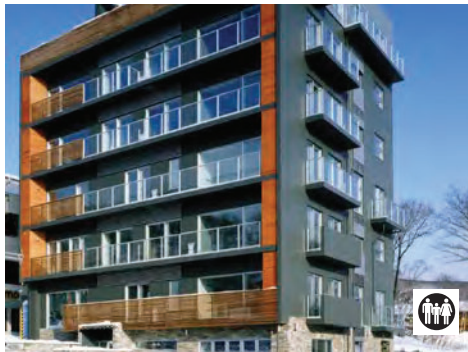


THE FRESH WATER

Beautifully designed apartments in the perfect location on the main street of Hirafu, only a minute walk to the shuttle bus stop, main restaurants and bars and a 6-minutes to the Family Ace lift.

7 nights from	Quad share
\$3,088pp	12-21 Dec, 13-22 Jan

Includes 6 day ski lift pass & return coach transfers from New Chitose Airport



SETSUMON

Luxury boutique apartments located amongst the main shopping and dining area of Hirafu village. Only a 5-minute walk to the Family Ace lift.

7 nights from	Quad share
\$3,316pp (Standard rate)	12-21 Dec, 13-22 Jan

Two bedroom apartment
Includes 6 day ski lift pass & return coach transfers from New Chitose Airport

ROOM SERVICE INFORMATION:

Applies to: Konkurito, Youtei Tracks, Powder Tracks, Yama Shizen

► Fresh towels will be provided (1pp) and rubbish removed every second day (not including arrival and departure days). Mid-stay cleaning and linen change is available only for guests staying 8 nights or more. With additional cost daily cleaning service is available.

Applies to: Ki Niseko

► Daily cleaning service. Linen will be replaced every 3 days.

Applies to: The Fresh Water

► Fresh towels will be provided and rubbish removed every 3rd day (not including arrival and departure days). Linen will be replaced every 5 days.



THE VALE NISEKO

One, two and three bedroom boutique style apartments located in Hirafu village, and just a 10-minute walk from Niseko Mt Resort Grand Hirafu.

7 nights from	Quad share
\$4,277pp (Standard rate)	12-21 Dec, 13-22 Jan

Two bedroom apartment
Includes 6 day ski lift pass & return coach transfers from New Chitose Airport

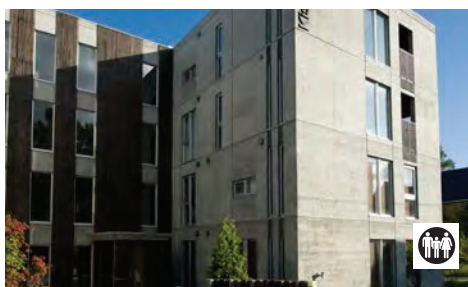


HORIZIN TOWN HOUSE

Two, three and four bedroom Townhouses located within easy access to lifts and shops.

7 nights from	2 bedroom
\$2,227pp (Standard rate)	05-11 Jan, 18 Jan-15 Feb
\$1,934	EARLY BIRD SPECIAL Book by 30 Jun

Two bedroom apartment
Includes 6 day ski lift pass & return coach transfers from New Chitose Airport



KISETSUKAN

These 9 luxury apartments are fully equipped with kitchens and private balconies. The property is located in Niseko village and easily accessible to the slopes, restaurants and hot springs.

7 nights from	2 bedroom
\$2,253pp (Standard rate)	05-11 Jan, 18 Jan-15 Feb
\$1,954	EARLY BIRD SPECIAL Book by 30 Jun

Two bedroom apartment
Includes 6 day ski lift pass & return coach transfers from New Chitose Airport



YOUTEI TRACKS

Luxury apartments located in the heart of Hirafu village. Each kitchen is fully equipped with stove, oven and dishwasher. Only a 300 metre walk to the Ace Family lift.

7 nights from	2 bedroom
\$2,556pp (Standard rate)	05-11 Jan, 18 Jan-15 Feb
\$2,197	EARLY BIRD SPECIAL Book by 30 Jun

Two bedroom apartment
Includes 6 day ski lift pass & return coach transfers from New Chitose Airport

Hokkaido Furano

FURANO

Furano is located in the centre of Hokkaido, four hours by coach from Sapporo. The area is unrivalled as a ski destination, with snowfalls of up to 14 meters per season. Furano is famous for blue-sky days and the ever-present Hokkaido powder, with long runs and magnificent views. You can also visit the local winery or cheese factory, or just stroll around this quaint town to get a feel for authentic Japan.

RESORT FACTS

Start Season: Mid December
Season End: Early May
Night Skiing: Yes, until 9pm
Max Elevation: 1,209m
Vertical Rise: 974m
Difficulty (beg/int/adv): 40% / 40% / 20%
Longest Course: 4,000m
No. of Courses/Runs: 23
No. of Lifts & Gondolas: 11+
Max Gradient: 34 degrees

TRANSPORT

New Chitose Airport to Furano
 Coach transfer, 3 hrs
Sapporo to Furano
 Coach transfer, 3 hrs
Asahikawa Airport to Furano
 Coach transfer, 1 hr



RESORT INN NORTH COUNTRY

Experience a nice blend of a traditional Japanese environment and the creature features of a Western hotel. This cosy hotel is a comfortable option for guests looking to explore Furano.

7 nights from	Twin share
\$1,721pp (Standard rate)	23 Dec – 14 Jan
\$1,515pp	EARLY BIRD SPECIAL 1 Book by 31 Jul
\$1,618pp	EARLY BIRD SPECIAL 2 Book by 31 Oct

Price includes return New Chitose Airport transfers + daily breakfast + 6 day lift pass

Child Discount Applies under 13yrs



HOTEL EDEL WARME

Reminiscent of a European ski lodge, Edel Warme is a 6 minute transfer to the slopes of Furano Ski Resort. Rooms are spacious and the hotel boasts a western restaurant and a large public onsen.

7 nights from	Twin share
\$1,841pp	01 Dec-29 Feb

Price includes return New Chitose Airport transfers + daily breakfast + 6 day lift pass

Child Discount Applies under 13yrs



FURANO PRINCE HOTEL

Located right on the Furano Ski Resort, the property offers 8 restaurants/cafés, free Wi-Fi at the lobby and free wired internet in rooms.

7 nights from	Twin share
\$2,016pp (Standard rate)	05-23 Jan, 03-29 Feb
\$1,734pp	EARLY BIRD SPECIAL 1 Book by 31 Aug
\$1,875pp	EARLY BIRD SPECIAL 2 Book by 31 Oct

Price includes return New Chitose Airport transfers + daily breakfast + 6 day lift pass

Child Discount Applies under 12yrs



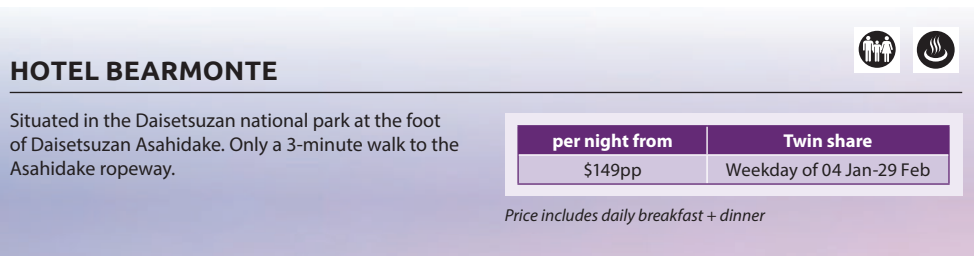
NEW FURANO PRINCE HOTEL

Located at the base of the Furano ski runs and in a quieter part of Furano town, this property offers a ski rental shop, hot spring restaurant and bar.

7 nights from	Twin share
\$2,563pp (Standard rate)	05-23 Jan
\$1,976pp	EARLY BIRD SPECIAL 1 Book by 31 Aug
\$2,172pp	EARLY BIRD SPECIAL 2 Book by 31 Oct

Price includes return New Chitose Airport transfers + daily breakfast + 6 day lift pass

Child Discount Applies under 12yrs



HOTEL BEARMONTE

Situated in the Daisetsuzan national park at the foot of Daisetsuzan Asahidake. Only a 3-minute walk to the Asahidake ropeway.

per night from	Twin share
\$149pp	Weekday of 04 Jan-29 Feb

Price includes daily breakfast + dinner

Hokkaido Tomamu

TOMAMU

Tomamu is known for its breathtaking views and great snow conditions, boasting an average 14m annual snow fall. Located in central Hokkaido; only 90 minutes from NewChitose Airport, this family friendly, self-contained resort is ideal for beginners and experts alike. In addition there are plenty of resort activities that will interest those looking for fun off the slopes, including the ice village, banana boating, ice skating and onsens.

RESORT FACTS

Start Season: Mid December
Season End: End of March
Night Skiing: Yes
Max Elevation: 1,239m
Vertical Rise: 699m
Difficulty (beg/int/adv): 38% / 48% / 14%
Longest Course: 4,200m
No. of Courses/Runs: 29
No. of Lifts & Gondolas: 6
Max Gradient: 35 degrees

TRANSPORT

New Chitose Airport to Tomamu
 JR Express Train + Shuttle Bus, 100mins
Sapporo to Tomamu
 JR Express Train, 70 mins
Asahikawa Airport to Tomamu
 Bus, 2 hrs



HOSHINO TOMAMU RESORT – THE TOWER

Thirty-six floor International high rise hotel at 121 meters tall is one of the tallest alpine resort hotels in the world. With a golf course, ski resort and restaurants nearby. This resort is perfect for families to enjoy various activities.



HOSHINO RESORT RISONARE TOMAMU

The Risonare Suites boast some of the largest rooms found in Japan. Located at the top of a ridge in the Tomamu ski resort, Risonare offers a premium ski-in ski-out service to all guests. Risonare is ideal for groups and families, in particular due to the sizes of the rooms.



SIDE TRIP

HOSHINO RESORT OMO 7 ASAHIKAWA

Situated in downtown Asahikawa, you will be well placed to explore several different resorts in Hokkaido, such as Furano and Tomamu. The hotel is modern and has a very unique décor throughout.

from per night	Twin share
\$77pp	Weekday of 01-21 Dec, 02-11, 13-31 Jan, 01-31 Mar

Includes daily breakfast

7 nights from	
Triple share	Quad share
\$1,308	\$1,315pp
14-20 Dec, 05-23 Jan, 01-22 Feb	
<ul style="list-style-type: none"> ▶ 7 nights accommodation in Tomamu Resort (The Tower) with daily breakfast ▶ Daily lift pass ▶ Transfer to/from New Chitose Airport to Tomamu ▶ Side trip – transfer to Sahoro or Furano ▶ Free entry to indoor pool & ice village 	

Child Discount Applies 4-11yrs



5 nights from	Twin share
\$919pp	14-20 Dec, 05-23 Jan, 01-22 Feb
EARLY BIRD SPECIAL Book by 20 Jun	
\$973pp	01-27 Dec, 05 Jan-31 Mar
<ul style="list-style-type: none"> ▶ 5 nights accommodation at Tomamu Resort (The Tower) with daily breakfast ▶ Daily lift pass ▶ Free entry to indoor pool & ice village ▶ Transfer to/from New Chitose Airport to Tomamu ▶ Side trip – transfer to Sahoro or Furano 	
Child Discount Applies 4-11yrs	
7 nights from	Twin share
\$1,067pp	14-20 Dec, 05-23 Jan, 01-22 Feb
EARLY BIRD SPECIAL Book by 20 Jun	
\$1,236pp	01-27 Dec, 05 Jan-31 Mar
<ul style="list-style-type: none"> ▶ 7 nights accommodation in Tomamu Resort (The Tower) with daily breakfast ▶ Daily lift pass ▶ Transfer to/from New Chitose Airport to Tomamu ▶ Side trip – transfer to Sahoro or Furano ▶ Free entry to indoor pool & ice village 	

Child Discount Applies 4-11yrs.

NATURE WONDERLAND

In the heart of Hokkaido
Majestic mountains meet with pure waters
An effortless escape to new luxury

Hokkaido Rusutsu and Kiroro

RUSUTSU

Rusutsu offers some of the best tree skiing in Japan and its extensive terrain park is one of the country's best. The Rusutsu 'Snowcat tour' (a chance to ski Mt Isola before the grooming machines) is legendary, and a must-do for the keen skier or snowboarder. The après-ski options at Rusutsu Resort are wide and varied - a large selection of restaurants, game centres, an indoor wave pool, a large hot springs bath-house and the ever-present karaoke rooms ensure there is something for everyone.

RESORT FACTS

Start Season: Mid December
Season End: Early May
Night Skiing: Yes, until 9pm
Max Elevation: 994m
Vertical Rise: 594m
Difficulty (beg/int/adv): 30% / 40% / 30%
Longest Course: 3,500m
No. of Courses/Runs: 37
No. of Lifts & Gondolas: 18
Max Gradient: 40 degrees

TRANSPORT

New Chitose Airport to Rusutsu
 Coach transfer, 1.5 hrs
Sapporo to Rusutsu
 Coach transfer, 1.5 hrs
Rusutsu to Niseko
 Coach transfer, 45 mins



RUSUTSU RESORT THE WESTIN

The property features maisonette style rooms accommodating up to seven people which is perfect for families or groups. Ski in/out access located at the base of the east mountain.

7 nights from	Quad or more share
\$4,277pp (Standard rate)	19-27 Dec, 11 Jan – 01 Feb
\$3,187	EARLY BIRD SPECIAL 1 Book by 30 Jun
\$3,916	EARLY BIRD SPECIAL 2 Book by 31 Aug

Return coach transfers from New Chitose Airport + Daily Breakfast + 6 Day Ski Lift Pass
 Child Discount Applies up to 12yrs



RUSUTSU NORTH & SOUTH WING

Hokkaido's largest ski area in winter, situated at the base of Mt Yotei, with 37 runs with excellent deep powder snow and tree skiing.

7 nights from	Twin share
\$3,652pp (Standard rate)	04-25 Jan, 01-22 Feb except 12 Jan
\$3,353	EARLY BIRD SPECIAL Book by 31 Jul

Return coach transfers from New Chitose Airport + Daily Breakfast + 6 Day Ski Lift Pass
 Child Discount Applies up to 12yrs

KIRORO

Kiroro is well known for being the earliest opening ski resort in Japan, sometimes as early as mid November and the abundance of powder snow has the resort open until May!

RESORT FACTS

Start Season: Mid December
Season End: Early May
Night Skiing: Yes, until 7pm
Max Elevation: 1,180m
Vertical Rise: 610m
Difficulty (beg/int/adv): 35% / 35% / 30%
Longest Course: 4,050m
No. of Courses/Runs: 21
No. of Lifts & Gondolas: 8
Max Gradient: 37 degrees

TRANSPORT

New Chitose Airport to Kiroro
 Coach transfer, 2 hrs



KIRORO TRIBUTE PORTFOLIO HOTEL

Located at the foot of the ski lopes, this hotel offers spacious guest rooms. The resort is also close to Otaru town and Sapporo city or great as a side trip from another ski resort.

4 nights from	Twin share, standard room
\$1,111pp (Standard rate)	14-20 Dec, 06-23 Jan, 09 Feb-07 Mar

Includes return coach transfers from New Chitose Airport + daily breakfast + 3 day lift pass
 Child Discount Applies up to 12yrs



SHERATON HOKKAIDO KIRORO RESORT

This resort is a picturesque snow trip destination featuring direct access to 21 powder ski courses and a traditional onsen experience.

4 nights from	Twin share
\$1,161pp (Standard rate)	14-20 Dec, 06-23 Jan, 09 Feb-07 Mar

Includes return coach transfers from New Chitose Airport + daily breakfast + 3 day lift pass
 Also available for **Deluxe Room Early Bird Special** 4 nights from \$666pp Triple share
 Child Discount Applies up to 12yrs.

Hokkaido Ski Tours and Festivals



SAPPORO SNOW FESTIVAL

This year marks the 71st anniversary of the Sapporo Snow Festival, otherwise known as the Yuki Matsuri. Roads lined with colourful lights, parks filled to the brim with ice sculptures and some of the most delectable street food, these are just some of the qualities that make the Sapporo Snow Festival an incredible addition to any itinerary. There are three areas of this festival are Odori Park, Tsudome and Susukino. Each of these are quite different from the other, so it is worthwhile taking the time to explore all three of them and soak in the vibrant atmosphere.

PERIOD OF THE FESTIVAL

Odori site and Susukino site:	4-11 February, 2020
Tsudome site:	January 31 to February 11, 2020

FESTIVAL SITES

Odori: Odori Park; Nishi 1 chōme ~ Nishi 12 chōme

Tsudome: The Community Dome, Tsudome

Susukino: Sapporo Ekimae-dōri; Minami 4 jō ~ Minami 7 jō



ASAHIDAKE SNOW CAT TOUR

Adult (13+)	\$703pp
--------------------	---------

Snowcat skiing is one of the ultimate adventures for the avid powder hound. Soak in the atmosphere as you climb up the mountain in the cosy snow cat in search of the highest quality powder the mountain can offer. No hiking, no crowds, just untouched and pristine snow for you to shred.

Includes free pick up from Furano

Minimum 3 people

*Must be an intermediate to advanced level with powder experience
Helmet and powder equipment is essential*



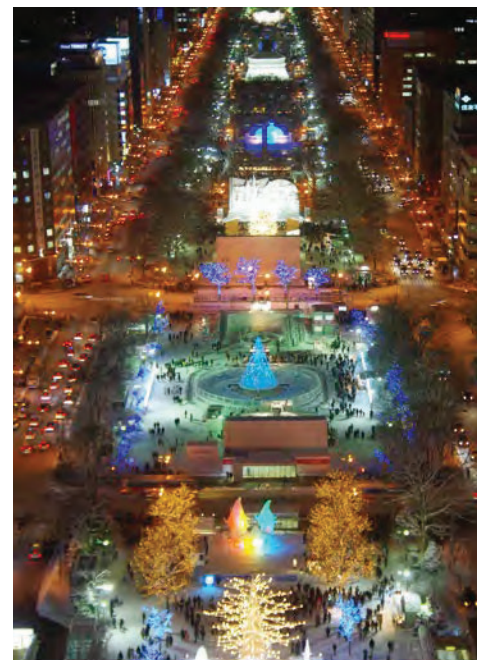
SAPPORO BEER GARDEN: 100-MINUTE PREMIUM A-LA-CARTE BUFFET AND ALL YOU CAN DRINK

Adult	\$103pp
Child (6-11yrs)	\$54pp

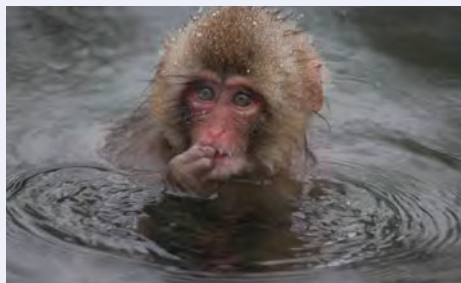
01 Dec 19-31 Mar 20 (Except 31 Dec)

The bright red brick building is a monument of architecture that symbolises an era that is now long gone. However, enjoy this nostalgic feeling as you tuck into a buffet of the highest order that features many of Hokkaido's specialties.

*Any extra services purchased must be paid for at the venue
Menu is subject to change at anytime*



Honshu Ski Tours and Festivals



SNOW MONKEY TOUR FROM HAKUBA

Adult	\$172
Child (6-11yrs)	\$119

14 Dec-29 Feb – every day, excluding 1 Jan & Tuesdays, Thursdays and Sundays in March

Visit Jigokudani Snow Monkey Park and see the Monkeys bathe in the natural hot springs, lunch at Obuse, a small town that blends Japanese culture, arts, good food and sake. Also visit Zenkoji Temple which holds the first Buddhist statue ever brought to Japan.

NOZAWA ONSEN FIRE FESTIVAL

Adult	\$204
Child (6-11yrs)	\$172

2020: 15th January
Departs Nagano or Hakuba

Fire, snow, sake and unlimited excitement are keynotes of this fascinating festival in Japans central alps. The festival, known as Dosojin Matsuri, is one of Japan's three most famous fire festivals and takes place in the ski resort of Nozawa Onsen on the 15th of January.

The festival preparations take place in October, where dozens of villagers cut down trees in the surrounding forest to create the focal pieces of the festival, the shaden. These mammoth wooden structures are then offered up to the deities by a priest from Kosuge shrine before being set on fire on the 15th of January. The blessed shaden as used as an invocation for a good harvest, food fortune or good health.



1-DAY MATSUMOTO CASTLE & LOCAL FOOD EXPERIENCE

Adult	\$289
Child (6-11yrs)	\$228

All year round: Sun, Tue, Wed, Fri.
Depart from Nagano Statio.

Explore the historic town of Matsumoto and experience Nagano's renowned food culture, starting with a visit to the beautiful Daio Wasabi Farm, followed by a soba making course and a tour of the regions famed sake breweries. Finally, enjoy the majestic Matsumoto castle, a registered national treasure and one of the last remaining castles in Japan.



GYOZA & SUSHI COOKING CLASS HAKUBA

Adult (6+)	\$125
------------	-------

Daily: 23 Dec-30 Apr

Don't miss the opportunity to learn from the best! You will learn how to make Gyoza, a Japanese dumpling, and one of Japans national treasures, sushi. Once you have cooked your tasty creation, sit down and enjoy eating your exciting cuisine.



Tokyo Hotels and Tours



SHIBA PARK HOTEL

LOCATION: HAMAMATSUCHO

Situated a short 7-minute walk to JR Hamamatsucho station, explore the wonders of Tokyo from this favourable location. Eat like a local with a wide range of dining options at your doorstep.

Price from per night	Twin share
\$172	Standard room low season rate

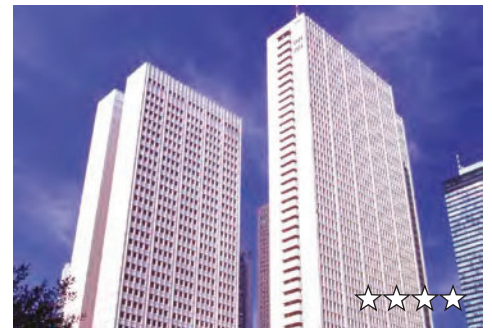


SHINAGAWA PRINCE HOTEL MAIN TOWER

LOCATION: SHINAGAWA

Shinagawa provides superior access to both Tokyo and Japan as a whole. A 2-minute walk gets you on the JR Yamanote line, Bullet train, NEX or Haneda Keikyu line. A true gateway to Japan!

Price from per night	Twin share
\$281	Standard room low season rate



KEIO PLAZA HOTEL (SUPERIOR ROOM)

LOCATION: SHINJUKU

The bustling Shinjuku ward leaves you spoiled for choice with plenty of entertainment, shopping and dining options, though the Keio Plaza has more than 29 restaurants and bars itself!

Price from per night	Twin share
\$375	Standard room low season rate

TOKYO DAY TOURS



SUMO TOURNAMENTS

Tokyo Sumo Tournament	\$131
2020: 12-26 Jan	

Sumo Tournament: Japan's national sport! Your expert guide will explain the ins-and-outs of Sumo as they take you through the Sumo museum, after which you will watch the fierce competition from reserved seats in Ryogoku Kokugikan!

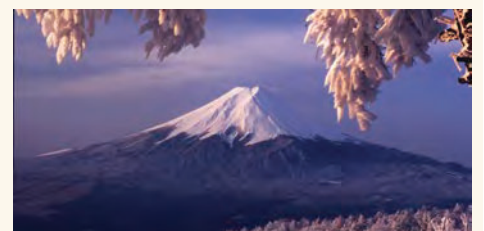


EDO TOKYO TOUR

Tour	Adult	Child (6-11yrs)
Morning Tokyo Tour	\$69	\$50
Full Day Tokyo Tour	\$132	\$92

2019: 01-31 Dec 2020: TBA

The Edo period (1603-1868) blessed Tokyo with numerous culturally and historically important sites. Your morning tour will take you to areas such as Tsukiji Outer Market, Tokyo Skytree Town, Asakusa and Meiji Shrine. The full day option gives you the chance to get on an Edo period ship, Gozabune, for lunch and a scenic tour of Tokyo Bay.



MT FUJI & HAKONE 1 DAY TOUR RETURN BY BULLET TRAIN

Adult	\$226
Child (6-11yrs)	\$117

2019: 01-31 Dec 2020: TBA

Enjoy the experience of visiting one of Japan's most famous landmarks, Mt Fuji. Your adventure will start at Mt Fuji's 5th Station where you can bask in the amazing views of the surrounding area (weather permitting), after which you will cruise your way along Lake Ashi to a traditional Japanese garden, Hakone-en. On route back to Tokyo you will board the Komagatake ropeway for your final Mt Fuji picture perfect moment before jumping on the Shinkansen Bullet Train.

Kyoto Hotels and Tours



GION YOSHIIMA RYOKAN

Yoshi-ima is a fine artistic wooden structure with an aged garden in Sukiya style. All rooms have tatami mats flooring and have private facilities including hair dryer, towels and yukata. Besides the private bath in your room, you can take a Japanese style public bath. Located in the "Gion" preserved area, an attractive part of the city known as the Geisha and Maiko quarter.

Price from per room per night	Japanese room
\$567	Standard room low season rate

Includes breakfast and dinner



KARASUMA KYOTO HOTEL

Located near the intersection of Shijo and Karasuma streets, in the heart of Kyoto's downtown.

Price from per room per night	Twin share
\$216	Standard room low season rate

Rate not applicable for weekends



NEW MIYAKO HOTEL

This classic hotel is just 2-minutes walk from JR Kyoto Station. Sunrise Tours offer a pick up from this hotel, making for easy sightseeing of the city.

Price from per room per night	Twin share
\$241	Standard room low season rate

Rate not applicable for Saturdays



GRANVIA HOTEL

This hotel is connected to JR Kyoto Station, providing easy access to train services. The hotel has many restaurants and the rooms are spacious.

Price from per room per night	Twin share
\$282	Standard room low season rate

KYOTO DAY TOURS



KYOTO MORNING TOUR

Adult	from \$88
Child (6-11yrs)	from \$75

2019: 01-30 Dec 2020: TBA

Kyoto is a city steeped in history and intrigue, from its rise to prominence as Japan's capital to its pre-modern urbanisation. Your guide will take you to some of the fascinating sights, such as the Golden Pavilion of Kinkaku-ji and Kyoto's imperial Palace. Enjoy the in-depth commentary of Japan's rich history!



KYOTO & NARA 1 DAY TOUR

Adult	from \$200pp
Child (6-11yrs)	from \$170pp

2019: 01-31 Dec 2020: TBA

Kyoto and Nara are the ancient capitals of Japan, both being prominent cities between the 8th and 18th century. Start your adventure in Kyoto, visiting Nijo Castle, the Imperial Palace and Kinkaku-ji. Then travel to Nara and see the incredible Todaiji and Kasuga Shrine. Your final stop is at Nara Deer Park and the Nara Nagomikan



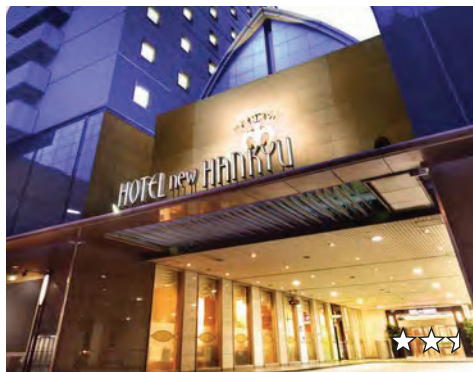
KYOTO 1 DAY TOUR

Adult	from \$180
Child (6-11yrs)	from \$152

2019: 01-31 Dec 2020: TBA

See the best that Kyoto has to offer, from beautiful shrines, temples and ancient architecture. Your expert guide will give you all the insight into the history of sights such as Nijo Castle, Kinkaku-ji, the Imperial Palace, Heian Shrine, Sanjusangendo and the UNESCO listed Kiyomizu Temple!

Other Cities Hotels and Tickets

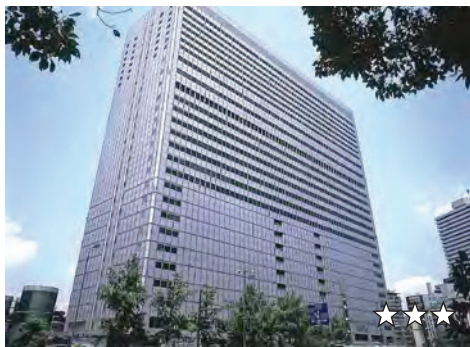


OSAKA NEW HANKYU HOTEL

Located opposite JR Osaka Station. This hotel is ideal for shopping or dining out in the Osaka-Kita area.

Price from per room per night	Twin share
\$256	Standard room low season rate

Rate not applicable for Saturdays



GRANVIA OSAKA HOTEL

Connected to JR Osaka Station, this hotel's convenient location is only 10-minutes by train from the Universal Studios Japan.

Price from per room per night	Twin share
\$339	Standard room low season rate

Rate not applicable for Saturdays

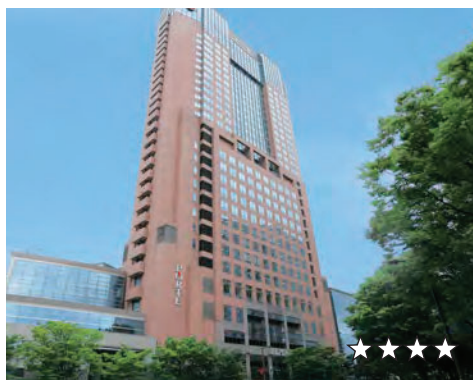


OSAKA AFTERNOON CITY TOUR

Adult	\$129
Child (6-11yrs)	\$116

2019: 01-29 Dec Wed, Sat, 2020: TBA

As you stroll to Osaka Castle, Admire the architecture of the walls, moats and then explore the castle itself. Afterward, Board a ship on the Okawa River to soak up the wonderful city of Osaka.



HOTEL NIKKO KANAZAWA

Located in front of JR Kanazawa Station and within walking distance of some of the most famous tourist spots in Kanazawa.

Price from per room per night	Twin share
\$342	Standard room low season rate

Rate not applicable for Saturdays



GRANVIA HIROSHIMA HOTEL

Adjacent to JR Hiroshima Station, the Granvia is a centrally located stylish hotel and great value.

Price from per room per night	Twin share
\$342	Standard room low season rate

Rate not applicable for Saturdays



BEST WESTERN TAKAYAMA

A three star city style hotel located in the centre of Takayama. Easy walking distance to all major attractions. A 3-minute walk from Takayama Station.

Price from per room per night	Twin share
\$252	Standard room low season rate

Rate not applicable for Saturdays

COME TO THE WORLD CLASS THEME PARK

UNIVERSAL STUDIOS JAPAN™

HARRY POTTER characters, names and related indicia are © & ™ Warner Bros. Entertainment Inc. Harry Potter Publishing Rights © 2019 (UK) Warner Bros. Entertainment Inc. All Rights Reserved. TM & © Universal Studios & Islands Entertainment. TM & © Universal Studios. All rights reserved. CR19-0914 / SA19-1054

UNIVERSAL STUDIOS JAPAN®

	Adult	Child (4-11yrs)
1 Day Fixed Date Ticket	\$110	\$76
2 Day Fixed Date Ticket	\$219	\$149

Children aged 3 and under are admitted free of charge
Must be used on a nominated date. Guaranteed entry to park

UNIVERSAL STUDIOS EXPRESS PASS

With a Universal Studios pass which guarantees you admission into the park, the Universal Express pass will shorten the waiting time for designated popular attractions. Please visit our website for booking details www.jtbtravel.com.au

Other Cities JR Pass and Korea Ski



FUJI VIEW HOTEL

Offering panoramic views of Mt Fuji and Lake Kawaguchi.

Price from per room per night	Twin share
\$389	Standard room low season rate

Rate not applicable for Saturdays



SAPPORO KEIO PLAZA HOTEL

Only a 5-minute walk from JR Sapporo station. This hotel is convenient for shopping and sightseeing.

Price from per room per night	Twin share
\$318	Standard room low season rate

Rate not applicable for Saturdays



CHITOSE AIRPORT HOTEL

Conveniently located at New Chitose Airport.

Price from per room per night	Twin share
\$205	Standard room low season rate

Rate not applicable for Saturdays

JAPAN RAIL PASSES



Your key to convenient sightseeing in Japan...

Japan has one of the world's most convenient and efficient railway networks. Travelling by train is the ideal way to see Japan. The trains are comfortable, clean and easy to ride. Sit back, relax and enjoy Japan as you glide across the country.

JAPAN RAIL PASS

This pass covers the entire Japan Railway JR system including some buses and ferries. You are able to travel everywhere in Japan with this pass. It comes in 7, 14 and 21 consecutive days. Each of these passes is available in Economy (Ordinary) and Green (Executive) Class. Please note that the Japan Rail Pass can only be purchased outside of Japan. Japan Rail Passes are available to travellers visiting Japan with tourist (temporary visitor) visas. The pass is not available for employment, working holiday or student visa holders.

Type	Economy (Standard)	Green (Executive)
7-day pass	\$378	\$505
14-day pass	\$603	\$818
21-day pass	\$771	\$1064

JR EAST PASS

This flexible five-day pass (any five-days within 14 days of issuance, including the day of issuance), covers the Eastern half of Japan's main island, Honshu (Ski areas).

Type	Economy
JR East Nagano Niigata Pass 5-days Flexible	\$221
JR East Tohoku Pass 5-days Flexible	\$247

For current prices and bookings please visit www.jtbtravel.com.au or contact JTB directly.



KOREA SKI

Experience Pyeongchang Ski Resort! A major winter sports region in Korea, Pyeongchang was home to the 2018 Winter Olympic Games.

Package Includes:

- ▶ Arrival transfer from Incheon Airport to Seoul Hotel
- ▶ 1 nights accommodation at IBIS Ambassador Insadong Hotel (3.5 star)
- ▶ Transfer from Seoul Hotel to Pyeongchang Ski Resort (4 hrs)
- ▶ 6 nights accommodation at Phoenix Park Hotel
- ▶ Daily breakfast
- ▶ Transfer from Pyeongchang Ski Resort to Incheon Airport (4 hrs)

Booking Conditions

Please read the booking conditions carefully as they incorporate the basis upon which bookings are accepted by JTB Australia Pty Ltd. ("JTB")

Brochure Validity

The brochure is valid from December 2019 to March 2020.

Changes in Prices and Itineraries

Prices in this brochure are based on tariffs current as of 01 June 2019. In this time of escalating prices and economic instability, it is impossible to predict accurately fluctuations in exchange rates or increases to the cost elements of tours. JTB does not have control of airfares, fuel, airport and airlines taxes and surcharges, hotel rates and other service provider's tariffs. In the event of such fluctuations or increases affecting the prices which JTB pay for transportation, hotel accommodation and other services, we reserve the right to adjust our prices as may be necessary at any time up to and including the day that final payment is made.

If we are forced to change your booking or part of your booking for any reason beyond our control, we reserve the right to vary your itinerary and will endeavour to give you notice thereof. In the event that any one change or series of changes to your itinerary demonstrates that your tour has thereby become materially different from the contemplated prior to the changes being effected and in respect of, we have accepted your deposit or full payment, you have the right to ask for a rearrangement or to withdraw from the tour and all monies will be refunded less any charges levied by suppliers.

It is essential you check with your booking agent whether any such changes have occurred in your tour before you complete your final payment. In the unlikely event that we have to cancel your tour because of events outside our control, we will, if we are able to, offer you an alternative tour of similar standard. If you do not accept this alternative tour, we will refund in full any monies already paid.

Deposit Payments

A non-refundable deposit of A\$220.00 per person for an air and land package or A\$110.00 per person plus 30% of the total package price (non refundable) is payable within 7 days of confirmation. The balance must reach JTB no later than 90 days prior to departure. If for any reason the deposit or the final balance is not received by us on the due date, we reserve the right to treat your booking as cancelled and apply the appropriate cancellation charges. The deposit will be forfeited. Depending on the property, different deposit requirements will apply. You will be advised of these conditions at time of quotation/booking.

Cancellation

Should you or a member of your party cancel your booking or any part of your booking, you must advise your booking agent in writing. The letter must be signed by the person who made the original booking. Cancellations by phone will not be accepted. Cancellations are subject to a charge to cover estimated costs. The non refundable deposit may be kept for future travel for up to 12 months.

Land arrangements: After confirmation a \$110.00 per person plus any charges levied by hoteliers and/or land operators.

Air arrangements: Any time after full payment and prior to departure \$110.00 per person plus any charges as required by the Airline Tariff Regulations. In certain circumstances cancellation fees may be subject to GST and will therefore be charged to you.

Amendments and Re-bookings Fees

After deposit has been received, amendment or re-booking fees of \$45.00 per file per amendment shall apply. In addition airlines or our service providers may also charge a fee.

Late Bookings

A late booking fee of \$55.00 per file will apply to package bookings requested within 7 days of departure.

Refunds

To the full extent permitted by law, no refund is available after the travel has commenced, in respect of any tours, accommodation, meals or any services not utilised.

Travel Insurance

We strongly recommend that at the time of booking you purchase travel insurance.

Health and Immigration

Passengers should familiarise themselves with any health or visa requirements that may apply to the areas they intend visiting. Passengers shall be responsible for all entry, exit, health and other documents required by law, regulations, orders, demands or requirements of countries being visited or transited. Each passenger shall carry a valid passport at all times. Visas are the responsibility of the passenger and JTB is not liable for any loss or expense due to a passenger's failure to comply with the above.

Baggage

The free baggage allowance for the international travel varies with airlines. Excess baggage charges are the responsibility of the passenger.

Pre-departure Contact

It is essential to ensure that you advise your booking agent of a 24 hour contact number.

Travel and Accommodation

It is important to note that all bookings with JTB are subject to the terms and conditions and limitations of liability imposed by airlines, coach operators, hoteliers, and other service providers, including but not limited to shipping, rail, car hire and restaurants, whose services we utilise. Some of which limit or exclude liability in respect to death, personal injury, delay and loss or damage to baggage and JTB's liability is excluded or limited accordingly.

Not Included in the Tour Price

Interstate and intrastate passengers are responsible for the cost of their own travel arrangements from their hometown to and from their choice of the international departure city. The price of any accommodation in Australia, passport, and visa costs where applicable, are not included in the tour price, nor are items of a personal nature such as laundry, taxis, telephone calls, excess baggage charges, insurance, portage, drinks, meals and room service, unless specified.

Airfare Conditions

Airfare conditions vary with airlines. Some fares have special requirements and payment deadlines. Please check these with your booking agent.

Booking Arrangements

All booking arrangements must be made through JTB or your local AFTA or licensed travel agent. The person affecting the booking shall be deemed to have accepted

the booking conditions on behalf of all persons named in the booking. The contract will be governed by and subject to the booking conditions and to the general information unless stated otherwise in writing and with the authority of JTB all communications will be sent to your agent. Your agent upon receipt of any tour monies, shall hold such monies for each and every person named in the booking until the booking is confirmed. At which time those monies shall be paid to JTB within 7 days as a deposit.

Liability of JTB

JTB shall assume liability incurred by the client due to wilful or negligent acts on the part of JTB or its agent in charge of the tour arrangements during the course of the travel. Subject to the matters set out below, all warranties and conditions implied by statute or generally at law are excluded to the maximum extent of the law.

Neither JTB nor its agents make any representation or undertaking as to the services provided by JTB except as set out in this document.

If the services supplied by JTB are supplied subject to the prescribed warranties and conditions of the Trade Practices Act (the "Act") or similar legislation and the Act or similar legislation prohibits the extent to which JTB can exclude, restrict or modify the application of the Act or its liability for breach of those warranties or conditions, JTB's liability for breach of any such condition or warranty will be limited, if such a limitation is permitted under Section 68A at JTB's option to:

- Supply the services again or
- Pay for the cost of having the services supplied again. JTB shall not be liable for damages incurred by the client owing to the reasons listed herein under and those similar thereto
- Natural disaster, war disturbances, acts of terror, uprisings and alteration or cancellation of the tour itinerary due to such causes;
- Accidents of fire related to transportation, accommodation facilities, and alteration or cancellation of the tour itinerary due to such causes;
- Orders of either Japanese or foreign government officials, immigration regulations, isolation as the result of infectious disease and alteration or cancellation of the tour itinerary due to such causes;
- Accidents occurring during the passengers free activities;
- Food poisoning;
- Theft;
- Delays and stoppages, alterations of schedule on route in relation to transportation facilities, and alterations or cancellation of the tour itinerary due to such causes;
- Any liability will be reduced proportionately by the extent to which the wilful or negligent act or omission on the part of the client caused or contributed to the liability, loss, expense or other similar cost; and
- Any case that is beyond the control of JTB and/or the agent in charge of the arrangements;

Law of Contract

The contract is governed in all respects by the law of the state of NSW and any legal action arising under the contract shall be litigated in the appropriate court, having jurisdiction in that state. By making any payment towards a booking, the passenger has agreed to the conditions set out in this brochure. JTB has the right to change or cancel the programme if necessary.





Reservations: 1300 739 330

www.japanski.com.au



JTB Australia Pty Ltd

JTB are members of AFTA, IATA, ATAS & CATO

ABN 99 003 218 728

Sydney

ATAS 10896

Level 18, Town Hall House,
456 Kent Street,
Sydney NSW 2000

Phone: 1300 739 330

Fax: (02) 9510 0497

Email: sydes.au@jtbap.com (NSW, ACT, WA, QLD, SA, TAS, NT)

Melbourne

ATAS 10896

Level 6, 31 Queen Street,
Melbourne VIC 3000

Phone: 1300 739 330

Fax: (03) 8623 0010

Email: melres.au@jtbap.com (VIC and All Travel Agents)

